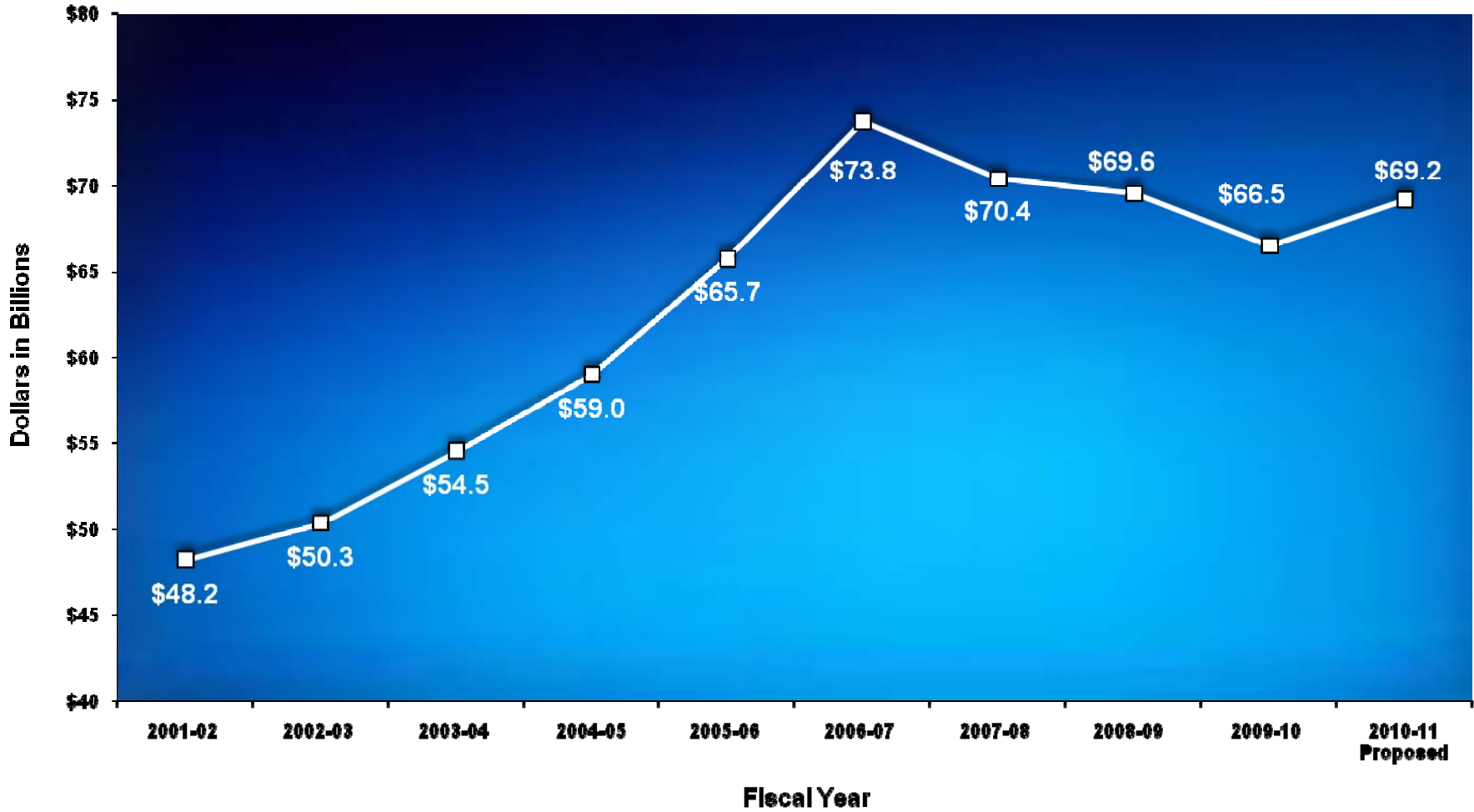
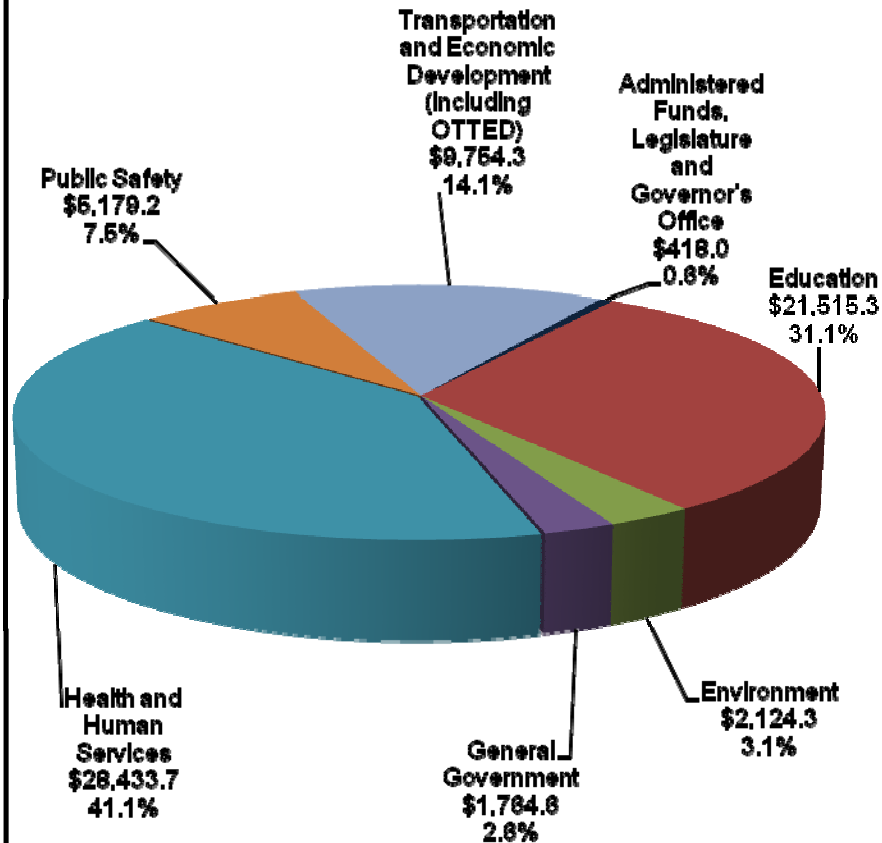


# Ten-Year History of Appropriations

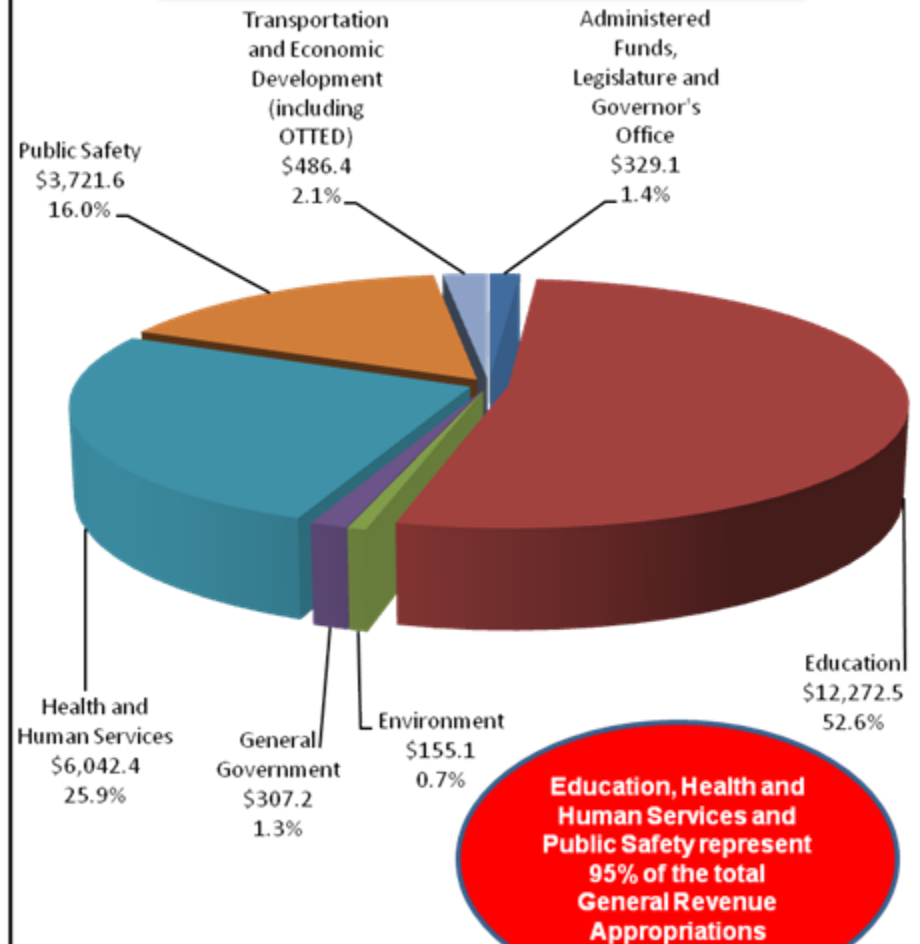


# Governor's Recommended Budget – Allocations by Policy Area – Fiscal Year 2010-11

Total Budget: \$69.2 Billion



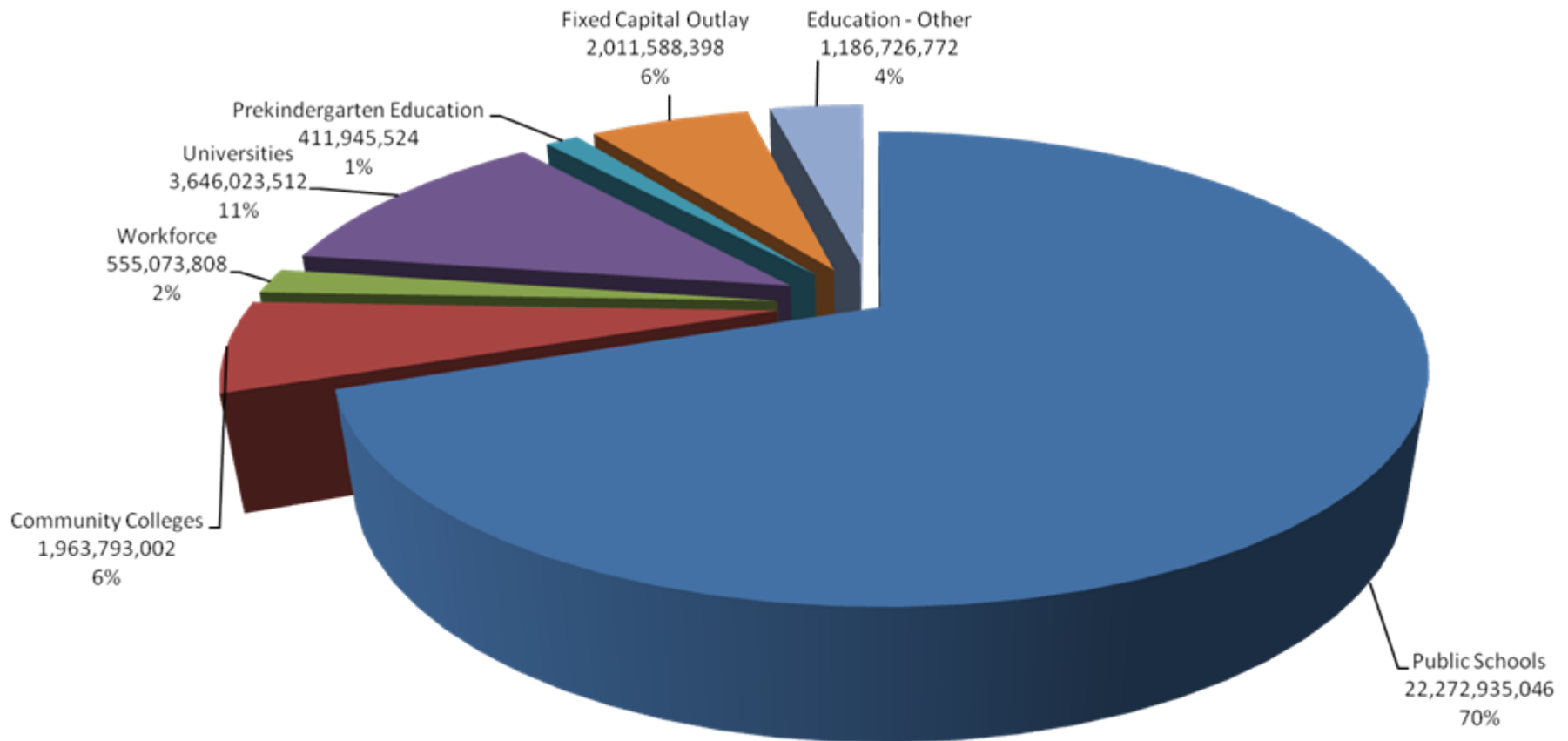
Total General Revenue: \$23.3 Billion



Education, Health and Human Services and Public Safety represent 95% of the total General Revenue Appropriations

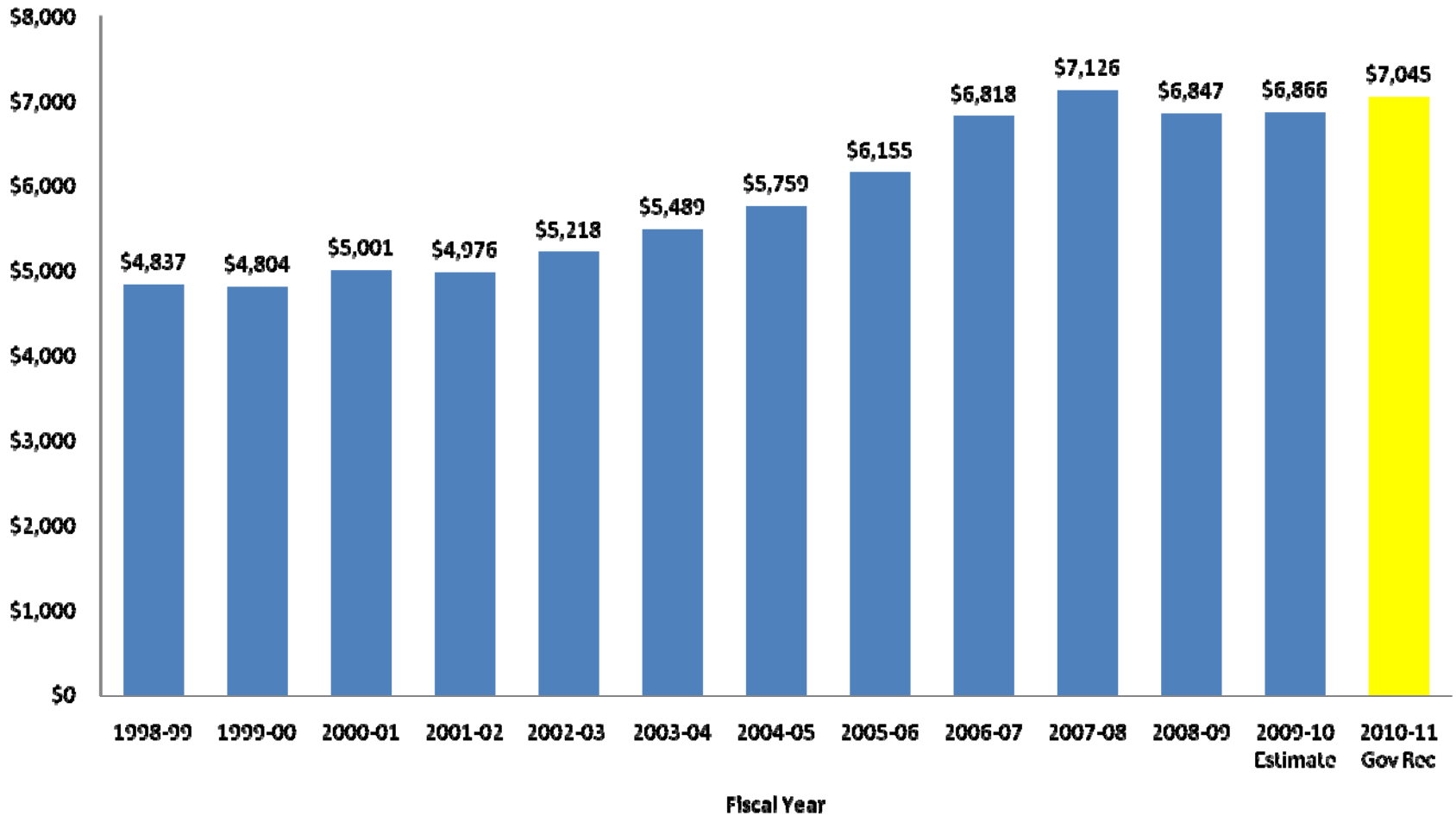
# Governor's Recommended Budget – FY 2010-11

## Education Policy Area – Total Budget: \$32.0 Billion



*Note: The following is included in this chart: 1) local funds in the amount of \$8.5 billion; 2) K-12 Workforce Tuition Revenues in the amount \$38 million; 3) Community College Tuition Revenues in the amount of \$808.2 million; 4) Indian Gaming in the amount of \$433 million; and 5) estimates on unexpended funds for K-12 remaining from Fiscal Year 2009-10 for ARRA in the amount of \$1.14 billion.*

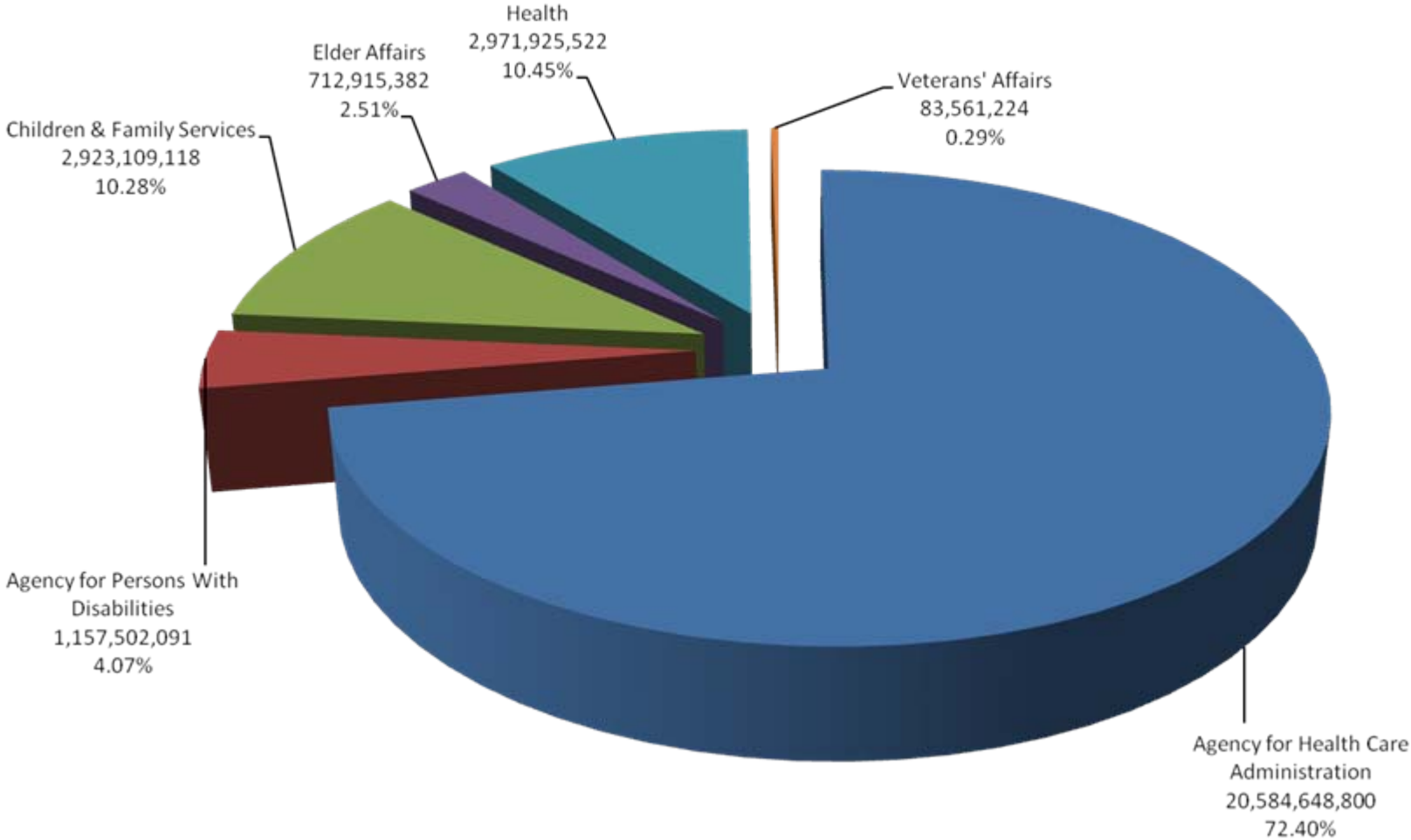
# K-12 Public Schools Operating Funds Per Student



# Governor's Recommended Budget – FY 2010-11

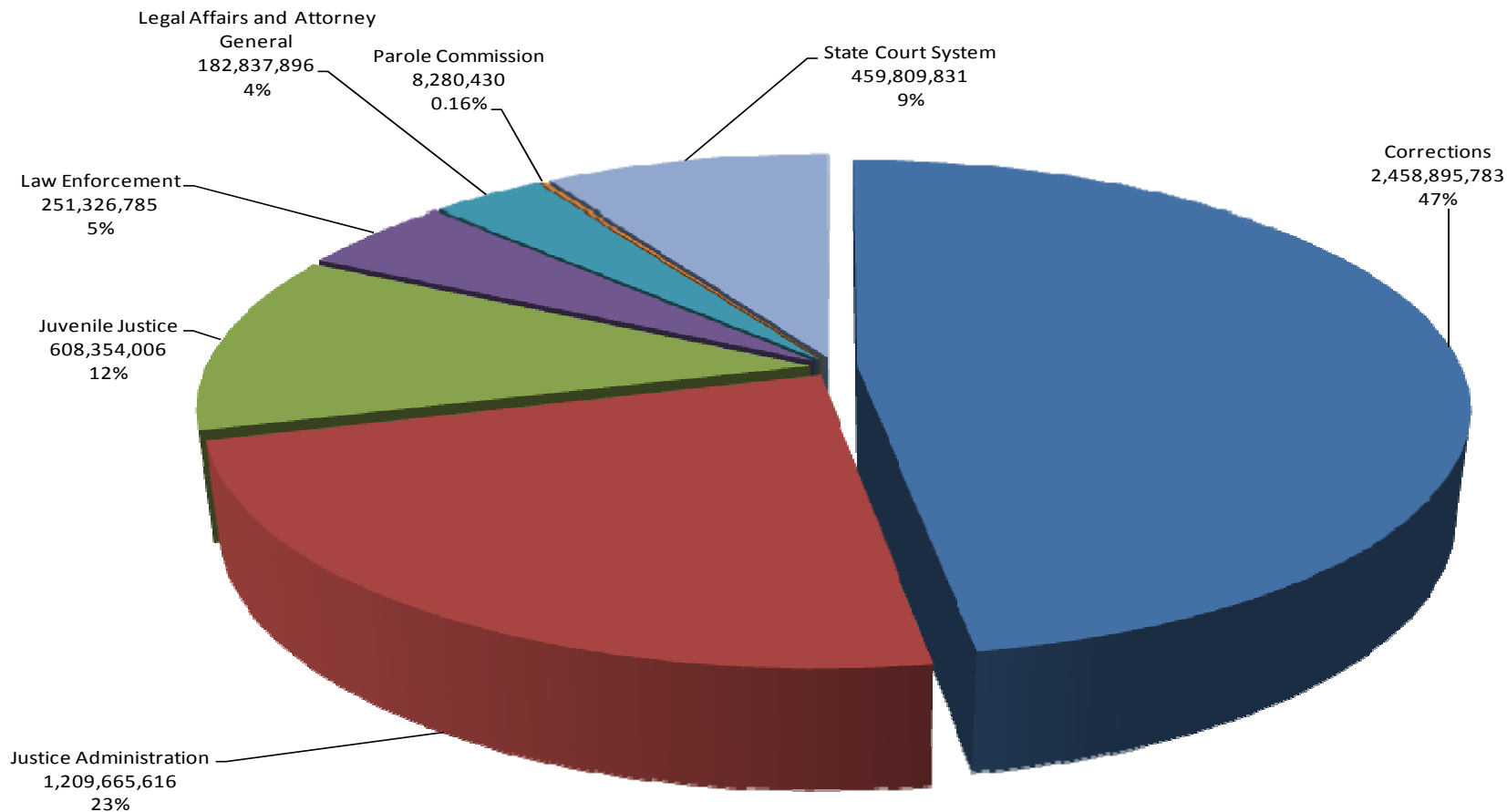
## Health and Human Services Policy Area –

### Total Budget: \$28.4 Billion



# Governor's Recommended Budget – FY 2010-11

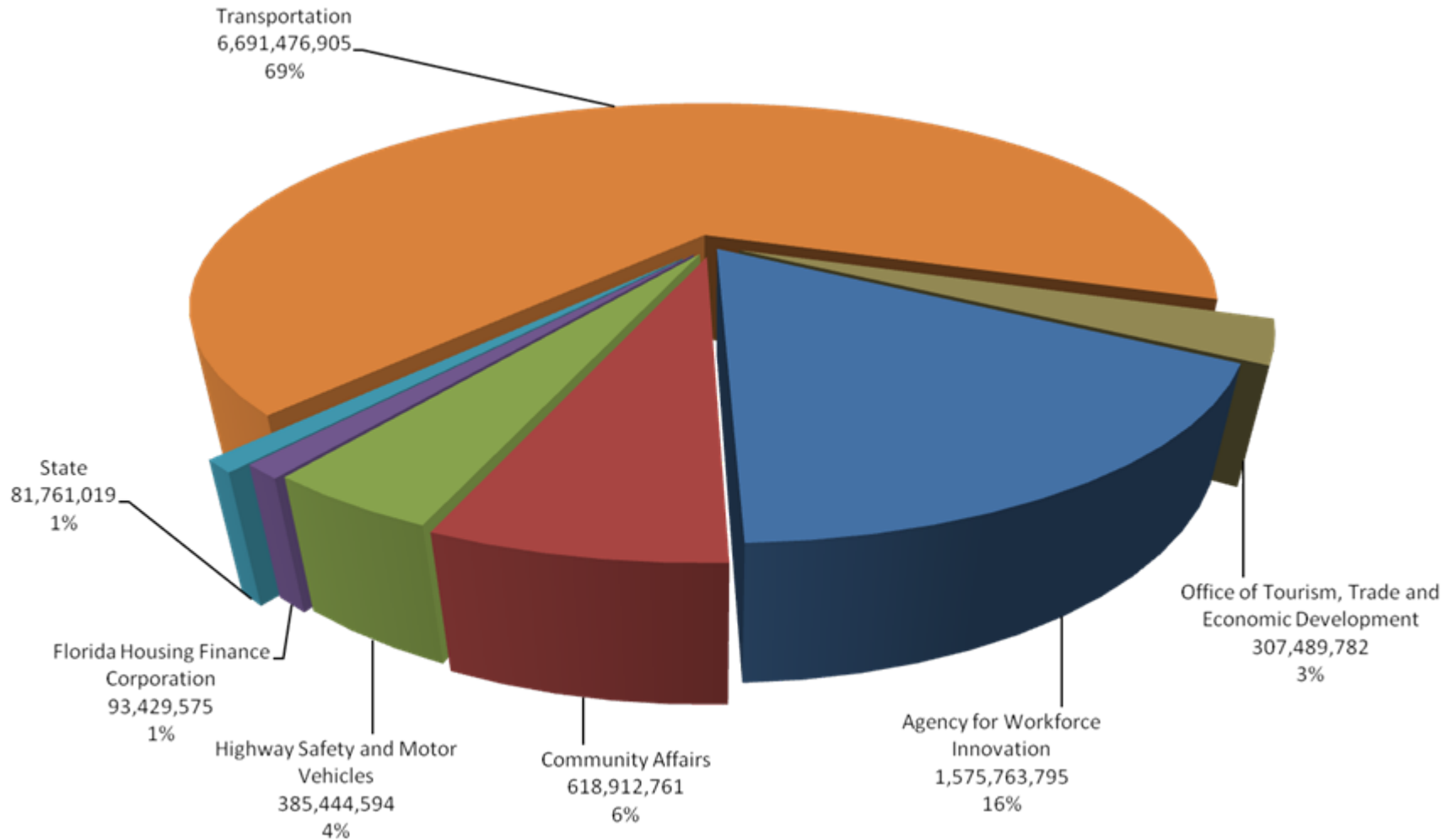
## Public Safety Policy Area – Total Budget: \$5.2 Billion



# Governor's Recommended Budget – FY 2010-11

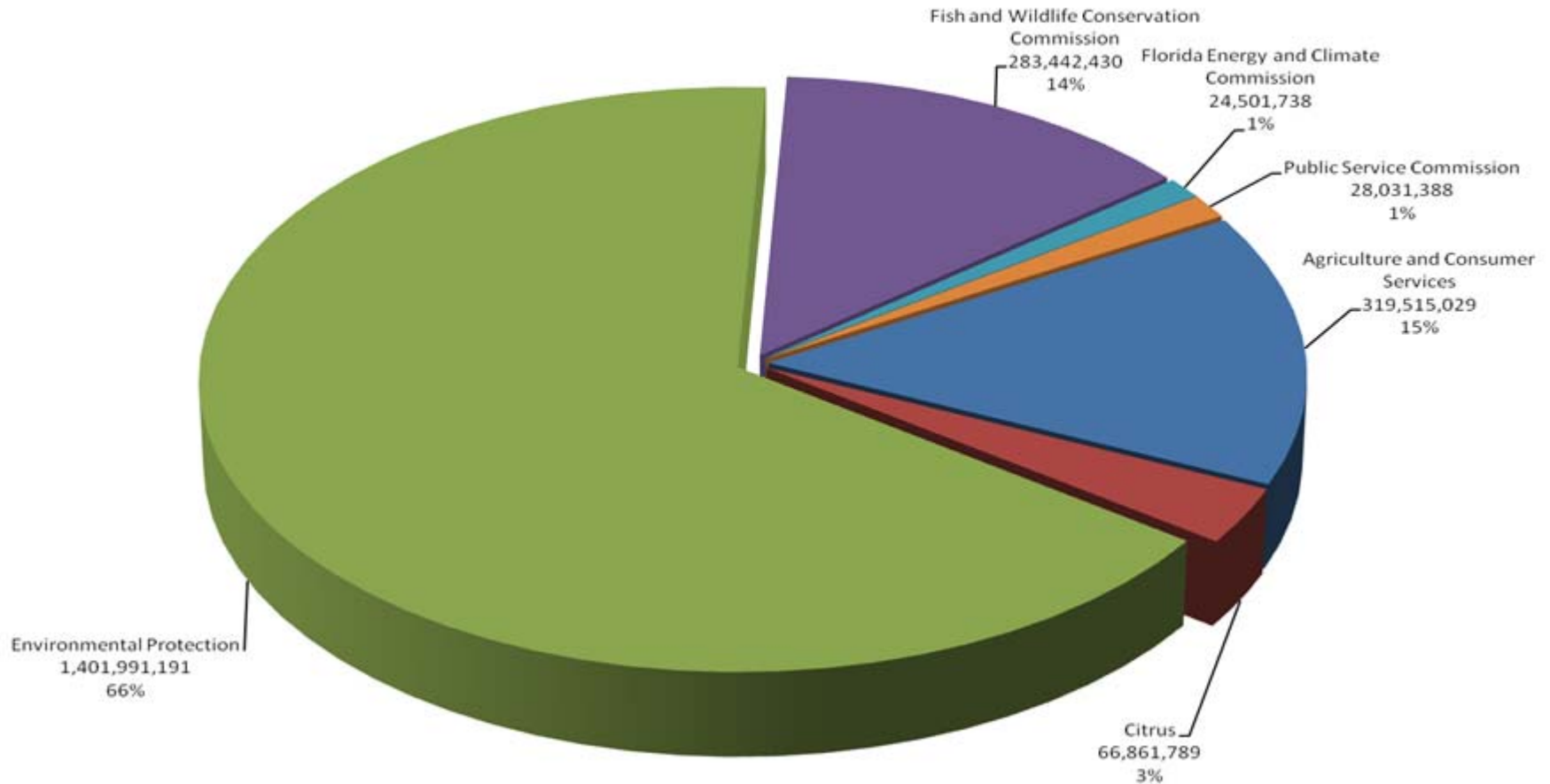
## Transportation and Economic Development Policy Area –

### Total Budget: \$9.7 Billion



# Governor's Recommended Budget – FY 2010-11

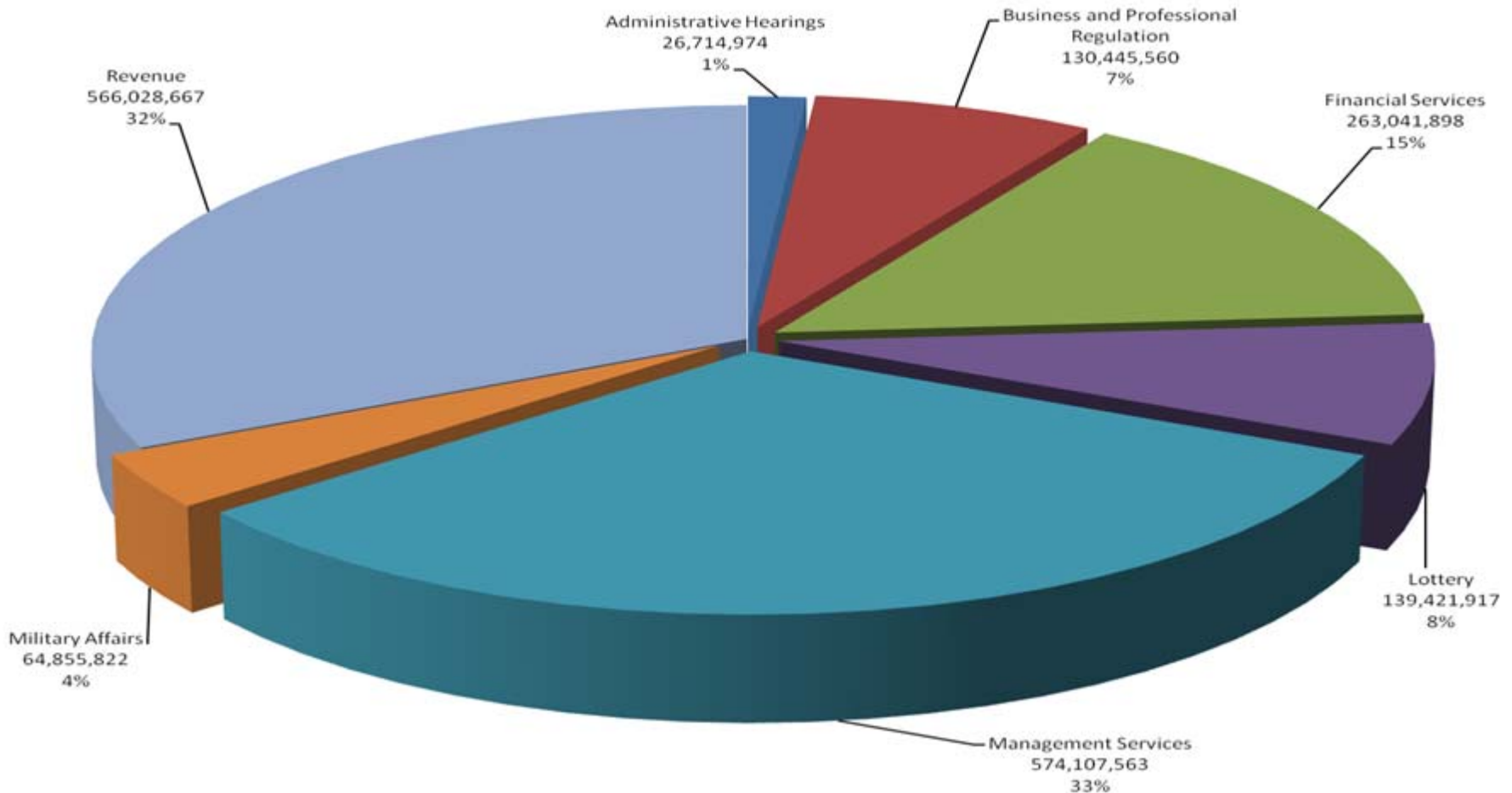
## Environmental Policy Area – Total Budget: \$2.1 Billion



# Governor's Recommended Budget – FY 2010-11

## General Government Policy Area –

### Total Budget: \$1.8 Billion



# Governor's Recommended Budget – FY 2010-11

## Governor's Office, Legislative Branch and Administered Funds – Total Budget: \$418.0 Million

