



**Charlie Crist**  
Governor  
**Cynthia R. Lorenzo**  
Director

**FOR IMMEDIATE RELEASE**  
**EMBARGOED:** December 18, 2009, 10:00AM

**CONTACT:** Robby Cunningham  
(850) 245-7130  
roby.cunningham@flaawi.com

## Florida's November Employment Figures Released

[www.employflorida.com](http://www.employflorida.com) – [www.FlaRecovery.com](http://www.FlaRecovery.com)

**TALLAHASSEE** – Florida's seasonally adjusted unemployment rate for November 2009 is 11.5 percent. This represents 1,056,000 jobless out of a labor force of 9,202,000. The unemployment rate is up 0.2 percentage point from the revised October rate of 11.3 percent, and up 4.3 percentage points from the November 2008 rate. The state's current unemployment rate is 1.5 percentage points higher than the national unemployment rate of 10.0 percent. November's rate is the highest since May 1975 when it was 11.9 percent.

Florida's total nonagricultural employment in November 2009 is 7,323,600, representing a job loss of 284,800, or -3.7 percent, compared to November 2008. This is steeper than the national rate of decline for November which is -3.5 percent over the year. The November 2009 job loss continues the trend of annual declines that began in August 2007. Florida's rate of job decline has moderated over the last few months, moving from -5.4 percent in March 2009 to -3.7 percent in November 2009.

Industries losing the most jobs are construction; trade, transportation, and utilities; and professional and business services. These three industries account for more than two-thirds of the job losses in the state. Health care has been Florida's only growth sector for most of 2009.

Earlier this week, the Florida Agency for Workforce Innovation, in partnership with the Department of Children and Families, Workforce Florida Inc. and the Regional Workforce Boards, announced a new program designed to create jobs for as many as 25,000 Floridians and support businesses. The state can potentially receive up to \$200 million in federal funding through the Temporary Assistance to Needy Families (TANF) program for the *Florida Back to Work* initiative (<http://www.floridajobs.org/workforce/backtowork/>) between now and September 30, 2010 to pay for jobs for low-income families receiving cash assistance.

"The rate released today reinforces the need for a variety of strategies to help bolster job growth in Florida," said agency Director Cynthia R. Lorenzo. "Under the leadership of Governor Crist, the Florida Back to Work program and the passenger rail legislation that the governor signed into law this week will help as many as 39,000 Floridians get back to work."

### Unemployment Benefits Extension

This month the Agency for Workforce Innovation launched an online application for the federal extension of unemployment benefits made available under *The Worker, Homeownership and Business Assistance Act of 2009*, also known as the federal Emergency Unemployment Compensation (EUC) Tier III, which took effect last month. The agency also began mailing out applications for those who do not have computer access.

Unemployed workers who exhausted all benefits **between November 1 and December 26, 2009**, or approximately two-thirds of eligible beneficiaries, have been or will be automatically enrolled and will not need to apply for the extension. Those who exhausted benefits **prior** to November 1, 2009, will need to apply. To date, more than 25,600 customers have completed online applications, and the agency has paid more than \$53 million to customers who either were automatically enrolled or whose online applications have been processed.

Director Lorenzo also encourages job seekers to visit the Employ Florida Marketplace at [www.employflorida.com](http://www.employflorida.com), Florida's online job bank that provides 24/7 access to a wide variety of local, state and

### Agency for Workforce Innovation

The Caldwell Building, Suite 100•107 East Madison Street•Tallahassee, Florida•32399-4120  
Telephone (850) 245-7105•Fax (850) 921-3223•TTY/TDD 1-800-955-8771-Voice 1-800-955-8770

[www.floridajobs.org](http://www.floridajobs.org)

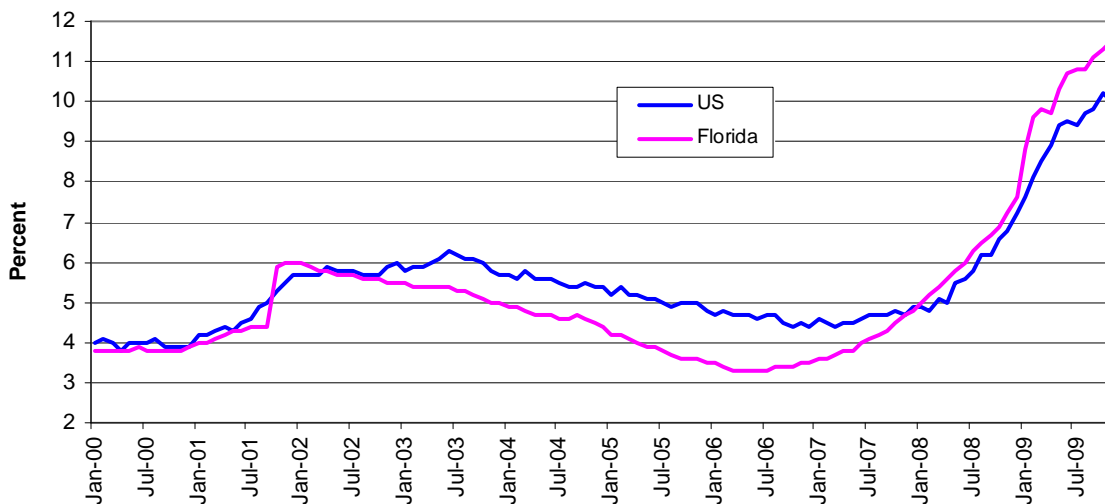
national job openings. Job seekers can post resumes and businesses can post job openings, and both can search the Web site's database to look for potential matches. Employ Florida Marketplace currently lists 146,000 job openings throughout the state.

**Florida's workforce system provides critical programs and services to job seekers and businesses alike. Such services offered throughout the state include:**

- **One-Stop Career Centers:** Florida's more than 90 One-Stop Career Centers, locally operated by Regional Workforce Boards, provide local access to job placement services, local workforce information and job training opportunities. Follow this link for a [Map of Florida One-Stop Career Centers](http://www.floridajobs.org/onestop/onestopdir/index.htm). ([www.floridajobs.org/onestop/onestopdir/index.htm](http://www.floridajobs.org/onestop/onestopdir/index.htm))
- **Mobile One-Stop Career Centers:** Florida's Mobile One-Stop Career Centers allow citizens in rural areas, at job fairs and during disasters or other emergencies to access critical workforce information and services.
- **Ready to Work Credential:** The Florida Ready to Work Credential program provides a career readiness certificate signed by Governor Charlie Crist that verifies the employee or job seeker has the foundational workplace skills required for most positions. Of value to both businesses looking to hire and workers seeking to find or maintain employment, Ready to Work is a free program funded by the State of Florida. For more information, please visit [www.floridareadytowork.com](http://www.floridareadytowork.com) or call 1-877-444-4505.
- **Labor Market Information:** The Agency for Workforce Innovation's Labor Market Statistics Center produces data such as employment, unemployment and wage information that assist workforce/economic development, education, employers and job seekers. These statistics assist with economic analysis, business recruitment, career counseling and other critical business decision-making. Follow this link for information about the Agency's [Labor Market Statistics Center](http://www.labormarketinfo.com/). ([www.labormarketinfo.com/.](http://www.labormarketinfo.com/))
- **Work Opportunity Tax Credit:** The Work Opportunity Tax Credit offers a financial incentive to private, for-profit employers to hire individuals from certain targeted groups who experience high rates of unemployment due to a variety of employment barriers. Follow this link for information about the [Work Opportunity Tax Credit](http://www.floridajobs.org/workforce/wotc.html). ([www.floridajobs.org/workforce/wotc.html](http://www.floridajobs.org/workforce/wotc.html))

For more information on these and other Agency for Workforce Innovation programs, go to [www.FloridaJobs.org](http://www.FloridaJobs.org).

**United States and Florida Unemployment Rates (seasonally adjusted)**



Source: Florida Agency for Workforce Innovation, Labor Market Statistics Center, Local Area Unemployment Statistics Program, in cooperation with the U.S. Department of Labor, Bureau of Labor Statistics.

### **Florida's Nonagricultural Employment by Industry (Seasonally Adjusted)**

- The number of jobs in Florida is 7,323,600, down 284,800 in November 2009 compared to a year ago. The industry losing the most jobs is construction (-73,300 jobs, -15.4 percent).
- Other industries losing jobs over the year include: trade, transportation, and utilities (-69,500 jobs, -4.5 percent); professional and business services (-58,500 jobs, -5.2 percent); manufacturing (-41,100 jobs, -11.4 percent); financial activities (-25,300 jobs, -4.9 percent); leisure and hospitality (-10,000 jobs, -1.1 percent); total government (-7,500 jobs, -0.7 percent); information (-6,300 jobs, -4.2 percent); and other services (-1,500 jobs, -0.4 percent).
- These industry job losses are partially due to weakness in specialty trade contractors; motor vehicle and parts dealers; employment services; fabricated metal product manufacturing; credit intermediation; amusement, gambling, and recreation; local government; telecommunications; and repair and maintenance.
- Private education and health services (+8,400 jobs, +0.8 percent) is the only sector gaining jobs among Florida's major industries. All of the increase is due to health care and social assistance (+10,500 jobs, +1.1 percent), primarily in nursing and residential care facilities. Private education declined by 2,100 jobs (-1.5 percent) over the year.

### **Local Area Unemployment Statistics (Not Seasonally Adjusted)**

- In November 2009, Liberty County has the state's lowest unemployment rate (6.1 percent), followed by Monroe County (7.3 percent); Jackson and Wakulla counties (7.8 percent each); Alachua, Leon, and Walton counties (7.9 percent each); and Holmes and Okaloosa counties (8.1 percent each). Many of the counties with the lowest unemployment rates are those with relatively high proportions of government employment.
- Flagler County (16.8 percent) has the highest unemployment rate in Florida in November 2009, followed by Hendry County (14.9 percent); Hernando and St. Lucie counties (14.7 percent each); Indian River County (14.6 percent); and Lee and Marion counties (13.9 percent each). The counties with high unemployment rates have either a high proportion of agricultural employees or continued weakness in construction and manufacturing.

### **Area Nonagricultural Employment (Not Seasonally Adjusted)**

- All metro areas in the state lost jobs over the year in November 2009. Metro areas with the steepest declines include Naples-Marco Island (-7.5 percent, -9,300 jobs); Palm Coast (-7.1 percent, -1,300 jobs); Sebastian-Vero Beach (-6.7 percent, -3,100 jobs); Cape Coral-Ft. Myers (-6.4 percent, -13,400 jobs); and Bradenton-Sarasota-Venice (-5.6 percent, -14,900 jobs).

**Note:** These unemployment and job growth rates are estimates, which are primarily based on surveys created and mandated by the US Bureau of Labor Statistics in cooperation with the Florida Agency for Workforce Innovation.

The unemployment rate is derived from Florida household surveys conducted by the US Census Bureau under contract with the US Bureau of Labor Statistics. The job growth rate is derived from Florida employer surveys conducted by the US Bureau of Labor Statistics.

Both estimates are revised on a monthly basis. In addition, these estimates are benchmarked (revised) annually based on actual counts from Florida's Unemployment Compensation tax records and other data.

**###**

An equal opportunity employer/ program. Auxiliary aids and services are available upon request to individuals with disabilities. All voice telephone numbers on this document may be reached by persons using TTY/TDD equipment via the Florida Relay Service at 711.

The Agency for Workforce Innovation is Florida's lead workforce agency and directly administers the state's various workforce and unemployment programs and the Office of Early Learning. Workforce development policy and guidance are provided by Workforce Florida, Inc. Partnering together, along with the state's 24 Regional Workforce Boards that deliver services through nearly 90 One-Stop Career Centers around the state, they compose the Employ Florida network.

*The next Florida Employment and Unemployment release will be on January 22, 2009 at 10:00 A.M.*

LABOR FORCE STATUS OF THE CIVILIAN NONINSTITUTIONAL POPULATION  
RELEASE DATE: DECEMBER 18, 2009

**SEASONALLY ADJUSTED**

|                           | Current Month<br>November 2009 | Month Ago<br>October 2009 | Year Ago<br>November 2008 | Over-the-Month<br>Change |         | Over-the-Year<br>Change |         |
|---------------------------|--------------------------------|---------------------------|---------------------------|--------------------------|---------|-------------------------|---------|
|                           |                                |                           |                           | Level                    | Percent | Level                   | Percent |
|                           |                                |                           |                           | <b>STATE OF FLORIDA</b>  |         |                         |         |
| Civilian Noninstitutional |                                |                           |                           |                          |         |                         |         |
| Population 16+            | 14,606,000                     | 14,597,000                | 14,502,000                | 9,000                    | 0.1     | 104,000                 | 0.7     |
| Civilian Labor Force      | 9,202,000                      | 9,183,000                 | 9,316,000                 | 19,000                   | 0.2     | -114,000                | -1.2    |
| Employment                | 8,146,000                      | 8,148,000                 | 8,641,000                 | -2,000                   | **      | -495,000                | -5.7    |
| Unemployment              | 1,056,000                      | 1,035,000                 | 675,000                   | 21,000                   | 2.0     | 381,000                 | 56.4    |
| Unemployment Rate (%)     | 11.5                           | 11.3                      | 7.2                       | 0.2                      | --      | 4.3                     | --      |

**UNITED STATES**

|                           |             |             |             |          |      |            |      |
|---------------------------|-------------|-------------|-------------|----------|------|------------|------|
| Civilian Noninstitutional |             |             |             |          |      |            |      |
| Population 16+            | 236,743,000 | 236,550,000 | 234,828,000 | 193,000  | 0.1  | 1,915,000  | 0.8  |
| Civilian Labor Force      | 153,877,000 | 153,975,000 | 154,620,000 | -98,000  | -0.1 | -743,000   | -0.5 |
| Employment                | 138,502,000 | 138,275,000 | 144,144,000 | 227,000  | 0.2  | -5,642,000 | -3.9 |
| Unemployment              | 15,375,000  | 15,700,000  | 10,476,000  | -325,000 | -2.1 | 4,899,000  | 46.8 |
| Unemployment Rate (%)     | 10.0        | 10.2        | 6.8         | -0.2     | --   | 3.2        | --   |

**NOT SEASONALLY ADJUSTED**

|                           | Current Month<br>November 2009 | Month Ago<br>October 2009 | Year Ago<br>November 2008 | Over-the-Month<br>Change |         | Over-the-Year<br>Change |         |
|---------------------------|--------------------------------|---------------------------|---------------------------|--------------------------|---------|-------------------------|---------|
|                           |                                |                           |                           | Level                    | Percent | Level                   | Percent |
|                           |                                |                           |                           | <b>STATE OF FLORIDA</b>  |         |                         |         |
| Civilian Noninstitutional |                                |                           |                           |                          |         |                         |         |
| Population 16+            | 14,606,000                     | 14,597,000                | 14,502,000                | 9,000                    | 0.1     | 104,000                 | 0.7     |
| Civilian Labor Force      | 9,195,000                      | 9,200,000                 | 9,264,000                 | -5,000                   | -0.1    | -69,000                 | -0.7    |
| Employment                | 8,142,000                      | 8,161,000                 | 8,580,000                 | -19,000                  | -0.2    | -438,000                | -5.1    |
| Unemployment              | 1,053,000                      | 1,039,000                 | 684,000                   | 14,000                   | 1.3     | 369,000                 | 53.9    |
| Unemployment Rate (%)     | 11.5                           | 11.3                      | 7.4                       | 0.2                      | --      | 4.1                     | --      |

**UNITED STATES**

|                           |             |             |             |          |      |            |      |
|---------------------------|-------------|-------------|-------------|----------|------|------------|------|
| Civilian Noninstitutional |             |             |             |          |      |            |      |
| Population 16+            | 236,743,000 | 236,550,000 | 234,828,000 | 193,000  | 0.1  | 1,915,000  | 0.8  |
| Civilian Labor Force      | 153,539,000 | 153,635,000 | 154,624,000 | -96,000  | -0.1 | -1,085,000 | -0.7 |
| Employment                | 139,132,000 | 139,088,000 | 144,609,000 | 44,000   | **   | -5,477,000 | -3.8 |
| Unemployment              | 14,407,000  | 14,547,000  | 10,015,000  | -140,000 | -1.0 | 4,392,000  | 43.9 |
| Unemployment Rate (%)     | 9.4         | 9.5         | 6.5         | -0.1     | --   | 2.9        | --   |

\*\* = Less than 0.05 percent

Note: All estimates except unemployment rates are rounded to the nearest thousand. Items may not add to totals or compute to displayed percentages due to rounding. All data are subject to revision.

Source: Florida Agency for Workforce Innovation, Labor Market Statistics Center, Local Area Unemployment Statistics Program, in cooperation with the U.S Department of Labor, Bureau of Labor Statistics.

**Nonagricultural Employment in Florida**  
**Seasonally Adjusted (in thousands)**

|   | November <sup>P</sup><br>2009 | October <sup>r</sup><br>2009 | November<br>2008 | Over-the-Month<br>Change |         | Over-the-Year<br>Change |         |
|---|-------------------------------|------------------------------|------------------|--------------------------|---------|-------------------------|---------|
|   |                               |                              |                  | Level                    | Percent | Level                   | Percent |
| <b>Total Nonagricultural Employment</b>           | 7,323.6                       | 7,340.3                      | 7,608.4          | -16.7                    | -0.2    | -284.8                  | -3.7    |
| <b>Construction</b>                               | 402.0                         | 411.2                        | 475.3            | -9.2                     | -2.2    | -73.3                   | -15.4   |
| <b>Manufacturing</b>                              | 319.7                         | 321.5                        | 360.8            | -1.8                     | -0.6    | -41.1                   | -11.4   |
| <b>Trade, Transportation, and Utilities</b>       | 1,474.0                       | 1,474.6                      | 1,543.5          | -0.6                     | *       | -69.5                   | -4.5    |
| <b>Wholesale Trade</b>                            | 332.8                         | 330.5                        | 344.1            | 2.3                      | 0.7     | -11.3                   | -3.3    |
| <b>Retail Trade</b>                               | 912.4                         | 915.0                        | 961.8            | -2.6                     | -0.3    | -49.4                   | -5.1    |
| <b>Transportation, Warehousing, and Utilities</b> | 228.8                         | 229.1                        | 237.6            | -0.3                     | -0.1    | -8.8                    | -3.7    |
| <b>Information</b>                                | 143.5                         | 146.1                        | 149.8            | -2.6                     | -1.8    | -6.3                    | -4.2    |
| <b>Financial Activities</b>                       | 494.1                         | 495.7                        | 519.4            | -1.6                     | -0.3    | -25.3                   | -4.9    |
| <b>Finance and Insurance</b>                      | 328.8                         | 329.2                        | 348.3            | -0.4                     | -0.1    | -19.5                   | -5.6    |
| <b>Real Estate, Rental, and Leasing</b>           | 165.3                         | 166.5                        | 171.1            | -1.2                     | -0.7    | -5.8                    | -3.4    |
| <b>Professional and Business Services</b>         | 1,058.3                       | 1,057.2                      | 1,116.8          | 1.1                      | 0.1     | -58.5                   | -5.2    |
| <b>Professional and Technical Services</b>        | 439.3                         | 438.4                        | 449.5            | 0.9                      | 0.2     | -10.2                   | -2.3    |
| <b>Management of Companies and Enterprises</b>    | 80.0                          | 79.4                         | 81.1             | 0.6                      | 0.8     | -1.1                    | -1.4    |
| <b>Administrative and Waste Services</b>          | 539.0                         | 539.4                        | 586.2            | -0.4                     | -0.1    | -47.2                   | -8.1    |
| <b>Education and Health Services</b>              | 1,066.1                       | 1,065.0                      | 1,057.7          | 1.1                      | 0.1     | 8.4                     | 0.8     |
| <b>Educational Services</b>                       | 138.6                         | 136.8                        | 140.7            | 1.8                      | 1.3     | -2.1                    | -1.5    |
| <b>Health Care and Social Assistance</b>          | 927.5                         | 928.2                        | 917.0            | -0.7                     | -0.1    | 10.5                    | 1.1     |
| <b>Leisure and Hospitality</b>                    | 908.6                         | 910.1                        | 918.6            | -1.5                     | -0.2    | -10.0                   | -1.1    |
| <b>Arts, Entertainment, and Recreation</b>        | 167.5                         | 172.8                        | 179.1            | -5.3                     | -3.1    | -11.6                   | -6.5    |
| <b>Accommodation and Food Services</b>            | 741.1                         | 737.3                        | 739.5            | 3.8                      | 0.5     | 1.6                     | 0.2     |
| <b>Other Services</b>                             | 332.9                         | 333.1                        | 334.4            | -0.2                     | -0.1    | -1.5                    | -0.4    |
| <b>Total Government</b>                           | 1,118.3                       | 1,119.7                      | 1,125.8          | -1.4                     | -0.1    | -7.5                    | -0.7    |
| <b>Local Government</b>                           | 773.6                         | 774.3                        | 782.4            | -0.7                     | -0.1    | -8.8                    | -1.1    |

<sup>P</sup> = preliminary, <sup>r</sup> = revised

\* = less than 0.1 percent

Note: Sum of detail may not equal totals due to rounding or the exclusion of certain industries from publication. All data are subject to revision.

Released December 18, 2009.

Source: Florida Agency for Workforce Innovation, Labor Market Statistics Center, Current Employment Statistics Program in cooperation with the U.S. Department of Labor, Bureau of Labor Statistics.

**NONAGRICULTURAL EMPLOYMENT IN FLORIDA  
STATEWIDE (Not Seasonally Adjusted)**

Released December 18, 2009

| Industry Title                                | November<br>2009 | October<br>2009 | November<br>2008 | Change from                   |         |                               |         |
|---|------------------|-----------------|------------------|-------------------------------|---------|-------------------------------|---------|
|   |                  |                 |                  | Oct 2009 to Nov 2009<br>Level | Percent | Nov 2008 to Nov 2009<br>Level | Percent |
| <b>Total Nonagricultural Employment</b>       | 7,364,200        | 7,342,200       | 7,650,700        | 22,000                        | 0.3%    | -286,500                      | -3.7%   |
| <b>Total Private</b>                          | 6,221,700        | 6,200,900       | 6,500,600        | 20,800                        | 0.3%    | -278,900                      | -4.3%   |
| <b>Goods Producing</b>                        | 729,900          | 742,200         | 844,400          | -12,300                       | -1.7%   | -114,500                      | -13.6%  |
| <b>Mining and Logging</b>                     | 6,100            | 6,100           | 6,300            | 0                             | 0.0%    | -200                          | -3.2%   |
| Mining, except Oil and Gas                    | 3,600            | 3,600           | 3,800            | 0                             | 0.0%    | -200                          | -5.3%   |
| <b>Construction</b>                           | 403,300          | 414,300         | 476,500          | -11,000                       | -2.7%   | -73,200                       | -15.4%  |
| Construction of Buildings                     | 87,900           | 90,400          | 98,400           | -2,500                        | -2.8%   | -10,500                       | -10.7%  |
| Heavy and Civil Engineering Construction      | 50,500           | 51,200          | 62,900           | -700                          | -1.4%   | -12,400                       | -19.7%  |
| Specialty Trade Contractors                   | 264,900          | 272,700         | 315,200          | -7,800                        | -2.9%   | -50,300                       | -16.0%  |
| Building Equipment Contractors                | 116,900          | 118,900         | 134,300          | -2,000                        | -1.7%   | -17,400                       | -13.0%  |
| <b>Manufacturing</b>                          | 320,500          | 321,800         | 361,600          | -1,300                        | -0.4%   | -41,100                       | -11.4%  |
| Durable Goods                                 | 214,700          | 214,700         | 243,500          | 0                             | 0.0%    | -28,800                       | -11.8%  |
| Fabricated Metal Product Manufacturing        | 29,400           | 30,100          | 36,600           | -700                          | -2.3%   | -7,200                        | -19.7%  |
| Computer and Electronic Product Manufacturing | 44,600           | 44,600          | 47,200           | 0                             | 0.0%    | -2,600                        | -5.5%   |
| Communications Equipment Manufacturing        | 7,900            | 7,900           | 8,300            | 0                             | 0.0%    | -400                          | -4.8%   |
| Transportation Equipment Manufacturing        | 38,700           | 38,900          | 41,200           | -200                          | -0.5%   | -2,500                        | -6.1%   |
| Aerospace Product and Parts Manufacturing     | 20,300           | 20,200          | 20,100           | 100                           | 0.5%    | 200                           | 1.0%    |
| Miscellaneous Durable Goods Manufacturing     | 27,700           | 27,700          | 29,800           | 0                             | 0.0%    | -2,100                        | -7.1%   |
| Nondurable Goods                              | 105,800          | 107,100         | 118,100          | -1,300                        | -1.2%   | -12,300                       | -10.4%  |
| Food Manufacturing                            | 27,000           | 26,700          | 29,000           | 300                           | 1.1%    | -2,000                        | -6.9%   |
| Beverage and Tobacco Product Manufacturing    | 10,300           | 10,300          | 10,800           | 0                             | 0.0%    | -500                          | -4.6%   |
| Paper Manufacturing                           | 9,100            | 9,100           | 10,000           | 0                             | 0.0%    | -900                          | -9.0%   |
| Printing and Related Support Activities       | 17,600           | 17,700          | 20,900           | -100                          | -0.6%   | -3,300                        | -15.8%  |
| Chemical Manufacturing                        | 19,000           | 19,000          | 20,700           | 0                             | 0.0%    | -1,700                        | -8.2%   |

Source: Florida Agency for Workforce Innovation, Labor Market Statistics Center, Current Employment Statistics Program (in cooperation with the U.S. Department of Labor, Bureau of Labor Statistics).

**NONAGRICULTURAL EMPLOYMENT IN FLORIDA  
STATEWIDE (Not Seasonally Adjusted)**

Released December 18, 2009

| Industry Title                                    | November<br>2009 | October<br>2009 | November<br>2008 | Change from                   |         |                               |         |
|---|------------------|-----------------|------------------|-------------------------------|---------|-------------------------------|---------|
|   |                  |                 |                  | Oct 2009 to Nov 2009<br>Level | Percent | Nov 2008 to Nov 2009<br>Level | Percent |
| <b>Service Providing</b>                          | 6,634,300        | 6,600,000       | 6,806,300        | 34,300                        | 0.5%    | -172,000                      | -2.5%   |
| <b>Private Service Providing</b>                  | 5,491,800        | 5,458,700       | 5,656,200        | 33,100                        | 0.6%    | -164,400                      | -2.9%   |
| <b>Trade, Transportation, and Utilities</b>       | 1,494,900        | 1,470,200       | 1,565,500        | 24,700                        | 1.7%    | -70,600                       | -4.5%   |
| <b>Wholesale Trade</b>                            | 334,100          | 331,000         | 345,400          | 3,100                         | 0.9%    | -11,300                       | -3.3%   |
| Merchant Wholesalers, Durable Goods               | 171,100          | 168,800         | 177,600          | 2,300                         | 1.4%    | -6,500                        | -3.7%   |
| Commercial Equipment Wholesalers                  | 46,900           | 47,200          | 46,800           | -300                          | -0.6%   | 100                           | 0.2%    |
| Electronic Goods Wholesalers                      | 22,600           | 22,700          | 23,500           | -100                          | -0.4%   | -900                          | -3.8%   |
| Machinery and Supply Wholesalers                  | 30,800           | 30,600          | 32,300           | 200                           | 0.7%    | -1,500                        | -4.6%   |
| Merchant Wholesalers, Nondurable Goods            | 117,800          | 117,300         | 121,300          | 500                           | 0.4%    | -3,500                        | -2.9%   |
| Grocery and Related Product Wholesalers           | 43,500           | 42,800          | 45,100           | 700                           | 1.6%    | -1,600                        | -3.6%   |
| Wholesale Electronic Markets and Agents           | 45,200           | 44,900          | 46,500           | 300                           | 0.7%    | -1,300                        | -2.8%   |
| <b>Retail Trade</b>                               | 930,800          | 909,300         | 981,300          | 21,500                        | 2.4%    | -50,500                       | -5.2%   |
| Motor Vehicle and Parts Dealers                   | 103,000          | 102,700         | 119,300          | 300                           | 0.3%    | -16,300                       | -13.7%  |
| Automobile Dealers                                | 64,300           | 65,600          | 75,900           | -1,300                        | -2.0%   | -11,600                       | -15.3%  |
| Furniture and Home Furnishings Stores             | 33,500           | 32,900          | 39,400           | 600                           | 1.8%    | -5,900                        | -15.0%  |
| Electronics and Appliance Stores                  | 35,600           | 34,000          | 38,400           | 1,600                         | 4.7%    | -2,800                        | -7.3%   |
| Building Material and Garden Supply Stores        | 70,900           | 70,500          | 72,900           | 400                           | 0.6%    | -2,000                        | -2.7%   |
| Food and Beverage Stores                          | 186,300          | 184,900         | 193,400          | 1,400                         | 0.8%    | -7,100                        | -3.7%   |
| Health and Personal Care Stores                   | 69,400           | 69,200          | 71,700           | 200                           | 0.3%    | -2,300                        | -3.2%   |
| Gasoline Stations                                 | 36,100           | 35,800          | 36,600           | 300                           | 0.8%    | -500                          | -1.4%   |
| Clothing and Accessory Stores                     | 105,700          | 100,500         | 110,600          | 5,200                         | 5.2%    | -4,900                        | -4.4%   |
| Sporting Goods, Hobby, Book, and Music Stores     | 34,300           | 32,300          | 36,400           | 2,000                         | 6.2%    | -2,100                        | -5.8%   |
| General Merchandise Stores                        | 185,900          | 177,100         | 189,300          | 8,800                         | 5.0%    | -3,400                        | -1.8%   |
| Department Stores                                 | 81,600           | 76,500          | 84,600           | 5,100                         | 6.7%    | -3,000                        | -3.6%   |
| Other General Merchandise Stores                  | 104,300          | 100,600         | 104,700          | 3,700                         | 3.7%    | -400                          | -0.4%   |
| Miscellaneous Store Retailers                     | 48,800           | 48,400          | 50,800           | 400                           | 0.8%    | -2,000                        | -3.9%   |
| Nonstore Retailers                                | 21,300           | 21,000          | 22,500           | 300                           | 1.4%    | -1,200                        | -5.3%   |
| Electronic Shopping and Mail-Order Houses         | 14,500           | 14,200          | 14,700           | 300                           | 2.1%    | -200                          | -1.4%   |
| <b>Transportation, Warehousing, and Utilities</b> | 230,000          | 229,900         | 238,800          | 100                           | 0.0%    | -8,800                        | -3.7%   |
| <b>Utilities</b>                                  | 23,600           | 23,700          | 24,100           | -100                          | -0.4%   | -500                          | -2.1%   |

Source: Florida Agency for Workforce Innovation, Labor Market Statistics Center, Current Employment Statistics Program (in cooperation with the U.S. Department of Labor, Bureau of Labor Statistics).

**NONAGRICULTURAL EMPLOYMENT IN FLORIDA  
STATEWIDE (Not Seasonally Adjusted)**

Released December 18, 2009

| Industry Title                                 | November<br>2009 | October<br>2009 | November<br>2008 | Change from                   |                                 |                               |                                 |
|--|------------------|-----------------|------------------|-------------------------------|---------------------------------|-------------------------------|---------------------------------|
|  |                  |                 |                  | Oct 2009 to Nov 2009<br>Level | Oct 2009 to Nov 2009<br>Percent | Nov 2008 to Nov 2009<br>Level | Nov 2008 to Nov 2009<br>Percent |
| <b>Transportation and Warehousing</b>          | 206,400          | 206,200         | 214,700          | 200                           | 0.1%                            | -8,300                        | -3.9%                           |
| Air Transportation                             | 30,400           | 30,600          | 31,000           | -200                          | -0.7%                           | -600                          | -1.9%                           |
| Water Transportation                           | 12,100           | 12,000          | 12,400           | 100                           | 0.8%                            | -300                          | -2.4%                           |
| Truck Transportation                           | 43,800           | 43,200          | 43,500           | 600                           | 1.4%                            | 300                           | 0.7%                            |
| Support Activities for Transportation          | 41,200           | 40,600          | 46,500           | 600                           | 1.5%                            | -5,300                        | -11.4%                          |
| Couriers and Messengers                        | 30,200           | 30,100          | 30,500           | 100                           | 0.3%                            | -300                          | -1.0%                           |
| Warehousing and Storage                        | 27,600           | 27,500          | 28,500           | 100                           | 0.4%                            | -900                          | -3.2%                           |
| <b>Information</b>                             | 143,600          | 145,600         | 150,000          | -2,000                        | -1.4%                           | -6,400                        | -4.3%                           |
| Publishing Industries, except Internet         | 36,300           | 36,500          | 38,200           | -200                          | -0.6%                           | -1,900                        | -5.0%                           |
| Broadcasting, except Internet                  | 13,200           | 13,200          | 14,900           | 0                             | 0.0%                            | -1,700                        | -11.4%                          |
| Telecommunications                             | 60,800           | 61,700          | 63,200           | -900                          | -1.5%                           | -2,400                        | -3.8%                           |
| Wired Telecommunications Carriers              | 44,500           | 44,900          | 46,600           | -400                          | -0.9%                           | -2,100                        | -4.5%                           |
| Internet Service Providers and Data Processing | 15,400           | 15,300          | 16,800           | 100                           | 0.7%                            | -1,400                        | -8.3%                           |
| <b>Financial Activities</b>                    | 493,300          | 496,600         | 518,500          | -3,300                        | -0.7%                           | -25,200                       | -4.9%                           |
| <b>Finance and Insurance</b>                   | 328,400          | 329,700         | 347,800          | -1,300                        | -0.4%                           | -19,400                       | -5.6%                           |
| Credit Intermediation and Related Activities   | 153,500          | 154,000         | 165,900          | -500                          | -0.3%                           | -12,400                       | -7.5%                           |
| Depository Credit Intermediation               | 95,800           | 96,400          | 102,000          | -600                          | -0.6%                           | -6,200                        | -6.1%                           |
| Insurance Carriers and Related Activities      | 131,800          | 132,200         | 133,900          | -400                          | -0.3%                           | -2,100                        | -1.6%                           |
| Insurance Carriers                             | 72,400           | 72,400          | 73,000           | 0                             | 0.0%                            | -600                          | -0.8%                           |
| Insurance Agencies, Brokerages, and Related    | 59,400           | 59,800          | 60,900           | -400                          | -0.7%                           | -1,500                        | -2.5%                           |
| <b>Real Estate, Rental, and Leasing</b>        | 164,900          | 166,900         | 170,700          | -2,000                        | -1.2%                           | -5,800                        | -3.4%                           |
| Real Estate                                    | 123,500          | 124,500         | 125,400          | -1,000                        | -0.8%                           | -1,900                        | -1.5%                           |
| <b>Professional and Business Services</b>      | 1,063,000        | 1,055,200       | 1,121,800        | 7,800                         | 0.7%                            | -58,800                       | -5.2%                           |
| <b>Professional and Technical Services</b>     | 439,900          | 437,700         | 450,000          | 2,200                         | 0.5%                            | -10,100                       | -2.2%                           |
| Legal Services                                 | 85,900           | 86,000          | 91,500           | -100                          | -0.1%                           | -5,600                        | -6.1%                           |
| Accounting, Tax Preparation, and Bookkeeping   | 56,000           | 56,700          | 53,100           | -700                          | -1.2%                           | 2,900                         | 5.5%                            |
| Architectural, Engineering, and Related        | 73,900           | 73,500          | 80,600           | 400                           | 0.5%                            | -6,700                        | -8.3%                           |
| Computer Systems Design and Related            | 65,900           | 64,400          | 65,200           | 1,500                         | 2.3%                            | 700                           | 1.1%                            |
| Management, Scientific, and Technical          | 71,200           | 70,100          | 70,000           | 1,100                         | 1.6%                            | 1,200                         | 1.7%                            |
| <b>Management of Companies and Enterprises</b> | 80,400           | 79,900          | 81,500           | 500                           | 0.6%                            | -1,100                        | -1.4%                           |

Source: Florida Agency for Workforce Innovation, Labor Market Statistics Center, Current Employment Statistics Program (in cooperation with the U.S. Department of Labor, Bureau of Labor Statistics).

**NONAGRICULTURAL EMPLOYMENT IN FLORIDA  
STATEWIDE (Not Seasonally Adjusted)**

Released December 18, 2009

| Industry Title                              | November<br>2009 | October<br>2009 | November<br>2008 | Change from                   |         |                               |         |
|---|------------------|-----------------|------------------|-------------------------------|---------|-------------------------------|---------|
|   |                  |                 |                  | Oct 2009 to Nov 2009<br>Level | Percent | Nov 2008 to Nov 2009<br>Level | Percent |
| <b>Administrative and Waste Services</b>    | 542,700          | 537,600         | 590,300          | 5,100                         | 1.0%    | -47,600                       | -8.1%   |
| Administrative and Support Services         | 521,700          | 516,500         | 569,500          | 5,200                         | 1.0%    | -47,800                       | -8.4%   |
| Employment Services                         | 183,300          | 182,000         | 209,000          | 1,300                         | 0.7%    | -25,700                       | -12.3%  |
| Business Support Services                   | 63,000           | 62,100          | 65,700           | 900                           | 1.5%    | -2,700                        | -4.1%   |
| Travel Arrangement and Reservation Services | 29,200           | 29,100          | 31,900           | 100                           | 0.3%    | -2,700                        | -8.5%   |
| Investigation and Security Services         | 63,300           | 63,000          | 63,200           | 300                           | 0.5%    | 100                           | 0.2%    |
| Services to Buildings and Dwellings         | 137,300          | 136,000         | 138,600          | 1,300                         | 1.0%    | -1,300                        | -0.9%   |
| Waste Management and Remediation Services   | 21,000           | 21,100          | 20,800           | -100                          | -0.5%   | 200                           | 1.0%    |
| <b>Education and Health Services</b>        | 1,070,100        | 1,068,700       | 1,061,800        | 1,400                         | 0.1%    | 8,300                         | 0.8%    |
| <b>Educational Services</b>                 | 142,000          | 139,500         | 144,000          | 2,500                         | 1.8%    | -2,000                        | -1.4%   |
| Elementary and Secondary Schools            | 46,500           | 46,100          | 48,100           | 400                           | 0.9%    | -1,600                        | -3.3%   |
| Colleges and Universities                   | 54,400           | 53,900          | 54,100           | 500                           | 0.9%    | 300                           | 0.6%    |
| <b>Health Care and Social Assistance</b>    | 928,100          | 929,200         | 917,800          | -1,100                        | -0.1%   | 10,300                        | 1.1%    |
| Ambulatory Health Care Services             | 378,500          | 379,500         | 377,500          | -1,000                        | -0.3%   | 1,000                         | 0.3%    |
| Offices of Physicians                       | 172,500          | 173,200         | 172,200          | -700                          | -0.4%   | 300                           | 0.2%    |
| Home Health Care Services                   | 58,100           | 57,200          | 57,800           | 900                           | 1.6%    | 300                           | 0.5%    |
| Hospitals                                   | 254,900          | 255,700         | 253,800          | -800                          | -0.3%   | 1,100                         | 0.4%    |
| Nursing and Residential Care Facilities     | 180,000          | 180,200         | 173,700          | -200                          | -0.1%   | 6,300                         | 3.6%    |
| Nursing Care Facilities                     | 102,500          | 102,100         | 98,400           | 400                           | 0.4%    | 4,100                         | 4.2%    |
| Community Care for the Elderly              | 46,300           | 46,300          | 45,500           | 0                             | 0.0%    | 800                           | 1.8%    |
| Social Assistance                           | 114,700          | 113,800         | 112,800          | 900                           | 0.8%    | 1,900                         | 1.7%    |
| <b>Leisure and Hospitality</b>              | 894,000          | 889,800         | 904,300          | 4,200                         | 0.5%    | -10,300                       | -1.1%   |
| <b>Arts, Entertainment, and Recreation</b>  | 165,600          | 169,000         | 177,100          | -3,400                        | -2.0%   | -11,500                       | -6.5%   |
| Amusement, Gambling, and Recreation         | 129,200          | 131,600         | 138,200          | -2,400                        | -1.8%   | -9,000                        | -6.5%   |
| Amusement Parks and Arcades                 | 53,300           | 56,200          | 55,000           | -2,900                        | -5.2%   | -1,700                        | -3.1%   |
| <b>Accommodation and Food Services</b>      | 728,400          | 720,800         | 727,200          | 7,600                         | 1.1%    | 1,200                         | 0.2%    |
| Accommodation                               | 149,700          | 147,100         | 149,800          | 2,600                         | 1.8%    | -100                          | -0.1%   |
| Food Services and Drinking Places           | 578,700          | 573,700         | 577,400          | 5,000                         | 0.9%    | 1,300                         | 0.2%    |

Source: Florida Agency for Workforce Innovation, Labor Market Statistics Center, Current Employment Statistics Program (in cooperation with the U.S. Department of Labor, Bureau of Labor Statistics).

**NONAGRICULTURAL EMPLOYMENT IN FLORIDA  
STATEWIDE (Not Seasonally Adjusted)**

Released December 18, 2009

| Industry Title                            | November<br>2009 | October<br>2009 | November<br>2008 | Change from                   |         |                               |         |
|---|------------------|-----------------|------------------|-------------------------------|---------|-------------------------------|---------|
|   |                  |                 |                  | Oct 2009 to Nov 2009<br>Level | Percent | Nov 2008 to Nov 2009<br>Level | Percent |
| <b>Other Services</b>                     | 332,900          | 332,600         | 334,300          | 300                           | 0.1%    | -1,400                        | -0.4%   |
| Repair and Maintenance                    | 66,000           | 66,600          | 68,500           | -600                          | -0.9%   | -2,500                        | -3.7%   |
| Automotive Repair and Maintenance         | 44,200           | 44,800          | 45,500           | -600                          | -1.3%   | -1,300                        | -2.9%   |
| Personal and Laundry Services             | 81,700           | 80,600          | 83,900           | 1,100                         | 1.4%    | -2,200                        | -2.6%   |
| Membership Associations and Organizations | 185,200          | 185,400         | 181,900          | -200                          | -0.1%   | 3,300                         | 1.8%    |
| <b>Total Government</b>                   | 1,142,500        | 1,141,300       | 1,150,100        | 1,200                         | 0.1%    | -7,600                        | -0.7%   |
| Federal                                   | 129,900          | 130,600         | 129,800          | -700                          | -0.5%   | 100                           | 0.1%    |
| State                                     | 219,600          | 219,600         | 218,300          | 0                             | 0.0%    | 1,300                         | 0.6%    |
| Local                                     | 793,000          | 791,100         | 802,000          | 1,900                         | 0.2%    | -9,000                        | -1.1%   |

Note: Employment estimates have been rounded to the nearest hundred. Sum of detail may not equal totals due to rounding or the exclusion of certain industries from publication. All data are subject to revision.

STATE OF FLORIDA  
LOCAL AREA UNEMPLOYMENT STATISTICS BY COUNTY  
(NOT SEASONALLY ADJUSTED)

| COUNTY       | NOVEMBER 2009 |                 |                       |          | OCTOBER 2009 |                 |                       |          | NOVEMBER 2008 |                 |                       |          |
|--------------|---------------|-----------------|-----------------------|----------|--------------|-----------------|-----------------------|----------|---------------|-----------------|-----------------------|----------|
|              | LABOR FORCE   | EMPLOY-<br>MENT | UNEMPLOYMENT<br>LEVEL | RATE (%) | LABOR FORCE  | EMPLOY-<br>MENT | UNEMPLOYMENT<br>LEVEL | RATE (%) | LABOR FORCE   | EMPLOY-<br>MENT | UNEMPLOYMENT<br>LEVEL | RATE (%) |
| ALACHUA      | 132320        | 121923          | 10397                 | 7.9      | 132430       | 122916          | 9514                  | 7.2      | 133763        | 127279          | 6484                  | 4.8      |
| BAKER        | 12169         | 10756           | 1413                  | 11.6     | 12127        | 10787           | 1340                  | 11.0     | 12115         | 11321           | 794                   | 6.6      |
| BAY          | 86849         | 77528           | 9321                  | 10.7     | 87456        | 79064           | 8392                  | 9.6      | 88244         | 81793           | 6451                  | 7.3      |
| BRADFORD     | 12757         | 11623           | 1134                  | 8.9      | 12736        | 11693           | 1043                  | 8.2      | 12694         | 12003           | 691                   | 5.4      |
| BREVARD      | 265566        | 233892          | 31674                 | 11.9     | 265215       | 234849          | 30366                 | 11.4     | 266808        | 245539          | 21269                 | 8.0      |
| BROWARD      | 1002039       | 900950          | 101089                | 10.1     | 1003017      | 905394          | 97623                 | 9.7      | 1013155       | 947518          | 65637                 | 6.5      |
| CALHOUN      | 6114          | 5546            | 568                   | 9.3      | 6130         | 5599            | 531                   | 8.7      | 5999          | 5663            | 336                   | 5.6      |
| CHARLOTTE    | 68839         | 59881           | 8958                  | 13.0     | 68697        | 59944           | 8753                  | 12.7     | 69187         | 62598           | 6589                  | 9.5      |
| CITRUS       | 59565         | 52054           | 7511                  | 12.6     | 59170        | 52032           | 7138                  | 12.1     | 59236         | 53750           | 5486                  | 9.3      |
| CLAY         | 94635         | 84797           | 9838                  | 10.4     | 94428        | 85039           | 9389                  | 9.9      | 95362         | 89249           | 6113                  | 6.4      |
| COLLIER      | 146650        | 128588          | 18062                 | 12.3     | 144816       | 126637          | 18179                 | 12.6     | 152761        | 140742          | 12019                 | 7.9      |
| COLUMBIA     | 33601         | 30070           | 3531                  | 10.5     | 33577        | 30326           | 3251                  | 9.7      | 32737         | 30712           | 2025                  | 6.2      |
| DESOTO       | 15644         | 13883           | 1761                  | 11.3     | 15071        | 13325           | 1746                  | 11.6     | 15481         | 14265           | 1216                  | 7.9      |
| DIXIE        | 5573          | 4845            | 728                   | 13.1     | 5609         | 4925            | 684                   | 12.2     | 5615          | 5151            | 464                   | 8.3      |
| DUVAL        | 448779        | 396150          | 52629                 | 11.7     | 447655       | 397281          | 50374                 | 11.3     | 449293        | 416950          | 32343                 | 7.2      |
| ESCAMBIA     | 140565        | 125268          | 15297                 | 10.9     | 139759       | 125848          | 13911                 | 10.0     | 140963        | 130959          | 10004                 | 7.1      |
| FLAGLER      | 31278         | 26023           | 5255                  | 16.8     | 31180        | 26138           | 5042                  | 16.2     | 32129         | 28552           | 3577                  | 11.1     |
| FRANKLIN     | 4554          | 4153            | 401                   | 8.8      | 4573         | 4216            | 357                   | 7.8      | 4618          | 4374            | 244                   | 5.3      |
| GADSDEN      | 21311         | 19160           | 2151                  | 10.1     | 21260        | 19244           | 2016                  | 9.5      | 21505         | 19967           | 1538                  | 7.2      |
| GILCHRIST    | 7967          | 7133            | 834                   | 10.5     | 7985         | 7191            | 794                   | 9.9      | 7991          | 7446            | 545                   | 6.8      |
| GLADES       | 4967          | 4482            | 485                   | 9.8      | 4966         | 4505            | 461                   | 9.3      | 5052          | 4680            | 372                   | 7.4      |
| GULF         | 6266          | 5606            | 660                   | 10.5     | 6270         | 5648            | 622                   | 9.9      | 6246          | 5822            | 424                   | 6.8      |
| HAMILTON     | 4919          | 4307            | 612                   | 12.4     | 4923         | 4363            | 560                   | 11.4     | 4951          | 4490            | 461                   | 9.3      |
| HARDEE       | 12426         | 10906           | 1520                  | 12.2     | 12027        | 10554           | 1473                  | 12.2     | 12596         | 11613           | 983                   | 7.8      |
| HENDRY       | 18605         | 15832           | 2773                  | 14.9     | 18152        | 15307           | 2845                  | 15.7     | 18921         | 16755           | 2166                  | 11.4     |
| HERNANDO     | 63082         | 53814           | 9268                  | 14.7     | 62811        | 54019           | 8792                  | 14.0     | 63724         | 57235           | 6489                  | 10.2     |
| HIGHLANDS    | 42832         | 37821           | 5011                  | 11.7     | 41685        | 36913           | 4772                  | 11.4     | 42080         | 38515           | 3565                  | 8.5      |
| HILLSBOROUGH | 601529        | 528818          | 72711                 | 12.1     | 600982       | 530839          | 70143                 | 11.7     | 608108        | 562436          | 45672                 | 7.5      |
| HOLMES       | 9239          | 8492            | 747                   | 8.1      | 9266         | 8574            | 692                   | 7.5      | 9235          | 8717            | 518                   | 5.6      |
| INDIAN RIVER | 60763         | 51865           | 8898                  | 14.6     | 60807        | 51730           | 9077                  | 14.9     | 61800         | 55957           | 5843                  | 9.5      |
| JACKSON      | 22585         | 20829           | 1756                  | 7.8      | 22561        | 20937           | 1624                  | 7.2      | 22663         | 21366           | 1297                  | 5.7      |
| JEFFERSON    | 6909          | 6292            | 617                   | 8.9      | 6925         | 6319            | 606                   | 8.8      | 6949          | 6557            | 392                   | 5.6      |
| LAFAYETTE    | 3130          | 2867            | 263                   | 8.4      | 3147         | 2912            | 235                   | 7.5      | 3062          | 2899            | 163                   | 5.3      |
| LAKE         | 135039        | 117836          | 17203                 | 12.7     | 135205       | 118796          | 16409                 | 12.1     | 136136        | 125303          | 10833                 | 8.0      |
| LEE          | 272627        | 234648          | 37979                 | 13.9     | 272031       | 234764          | 37267                 | 13.7     | 282907        | 255089          | 27818                 | 9.8      |
| LEON         | 146989        | 135430          | 11559                 | 7.9      | 146486       | 136022          | 10464                 | 7.1      | 148704        | 141133          | 7571                  | 5.1      |
| LEVY         | 17215         | 15094           | 2121                  | 12.3     | 17252        | 15240           | 2012                  | 11.7     | 17473         | 15972           | 1501                  | 8.6      |
| LIBERTY      | 4120          | 3869            | 251                   | 6.1      | 4119         | 3897            | 222                   | 5.4      | 4017          | 3835            | 182                   | 4.5      |

STATE OF FLORIDA  
LOCAL AREA UNEMPLOYMENT STATISTICS BY COUNTY  
(NOT SEASONALLY ADJUSTED)

| COUNTY                  | NOVEMBER 2009 |                 |                       |                          | OCTOBER 2009 |                 |                       |                          | NOVEMBER 2008 |                 |                       |                          |
|-------------------------|---------------|-----------------|-----------------------|--------------------------|--------------|-----------------|-----------------------|--------------------------|---------------|-----------------|-----------------------|--------------------------|
|                         | LABOR FORCE   | EMPLOY-<br>MENT | UNEMPLOYMENT<br>LEVEL | UNEMPLOYMENT<br>RATE (%) | LABOR FORCE  | EMPLOY-<br>MENT | UNEMPLOYMENT<br>LEVEL | UNEMPLOYMENT<br>RATE (%) | LABOR FORCE   | EMPLOY-<br>MENT | UNEMPLOYMENT<br>LEVEL | UNEMPLOYMENT<br>RATE (%) |
| MADISON                 | 6991          | 6085            | 906                   | 13.0                     | 6975         | 6152            | 823                   | 11.8                     | 6990          | 6412            | 578                   | 8.3                      |
| MANATEE                 | 143403        | 124870          | 18533                 | 12.9                     | 142804       | 125089          | 17715                 | 12.4                     | 146637        | 134170          | 12467                 | 8.5                      |
| MARION                  | 139170        | 119868          | 19302                 | 13.9                     | 138847       | 120194          | 18653                 | 13.4                     | 140675        | 127182          | 13493                 | 9.6                      |
| MARTIN                  | 64452         | 56442           | 8010                  | 12.4                     | 63940        | 56262           | 7678                  | 12.0                     | 64044         | 58800           | 5244                  | 8.2                      |
| MIAMI-DADE              | 1226918       | 1098429         | 128489                | 10.5                     | 1242228      | 1095203         | 147025                | 11.8                     | 1214031       | 1139072         | 74959                 | 6.2                      |
| MONROE                  | 47851         | 44358           | 3493                  | 7.3                      | 47014        | 43680           | 3334                  | 7.1                      | 47546         | 45206           | 2340                  | 4.9                      |
| NASSAU                  | 35756         | 31860           | 3896                  | 10.9                     | 35761        | 31951           | 3810                  | 10.7                     | 35896         | 33533           | 2363                  | 6.6                      |
| OKALOOSA                | 95848         | 88043           | 7805                  | 8.1                      | 95767        | 88609           | 7158                  | 7.5                      | 97323         | 91982           | 5341                  | 5.5                      |
| OKEECHOBEE              | 18372         | 15894           | 2478                  | 13.5                     | 18312        | 15888           | 2424                  | 13.2                     | 18149         | 16350           | 1799                  | 9.9                      |
| ORANGE                  | 600005        | 530003          | 70002                 | 11.7                     | 602604       | 534319          | 68285                 | 11.3                     | 608028        | 563588          | 44440                 | 7.3                      |
| OSCEOLA                 | 135915        | 117838          | 18077                 | 13.3                     | 136503       | 118798          | 17705                 | 13.0                     | 136438        | 125305          | 11133                 | 8.2                      |
| PALM BEACH              | 628917        | 555598          | 73319                 | 11.7                     | 626063       | 554039          | 72024                 | 11.5                     | 630908        | 581767          | 49141                 | 7.8                      |
| PASCO                   | 196064        | 170128          | 25936                 | 13.2                     | 195319       | 170778          | 24541                 | 12.6                     | 198468        | 180944          | 17524                 | 8.8                      |
| PINELLAS                | 453190        | 400055          | 53135                 | 11.7                     | 452630       | 401583          | 51047                 | 11.3                     | 461209        | 425487          | 35722                 | 7.7                      |
| POLK                    | 274252        | 238850          | 35402                 | 12.9                     | 273217       | 238895          | 34322                 | 12.6                     | 275550        | 252844          | 22706                 | 8.2                      |
| PUTNAM                  | 33090         | 28847           | 4243                  | 12.8                     | 33464        | 29185           | 4279                  | 12.8                     | 33159         | 30265           | 2894                  | 8.7                      |
| ST. JOHNS               | 92778         | 83773           | 9005                  | 9.7                      | 92528        | 84012           | 8516                  | 9.2                      | 93856         | 88171           | 5685                  | 6.1                      |
| ST. LUCIE               | 124351        | 106109          | 18242                 | 14.7                     | 124056       | 105772          | 18284                 | 14.7                     | 123554        | 110542          | 13012                 | 10.5                     |
| SANTA ROSA              | 68982         | 62129           | 6853                  | 9.9                      | 68878        | 62416           | 6462                  | 9.4                      | 69459         | 64951           | 4508                  | 6.5                      |
| SARASOTA                | 164926        | 144658          | 20268                 | 12.3                     | 165102       | 144911          | 20191                 | 12.2                     | 169234        | 155430          | 13804                 | 8.2                      |
| SEMINOLE                | 239136        | 213067          | 26069                 | 10.9                     | 240187       | 214802          | 25385                 | 10.6                     | 243198        | 226569          | 16629                 | 6.8                      |
| SUMTER                  | 32125         | 28994           | 3131                  | 9.7                      | 32120        | 29152           | 2968                  | 9.2                      | 32150         | 30076           | 2074                  | 6.5                      |
| SUWANNEE                | 18165         | 16185           | 1980                  | 10.9                     | 18060        | 16243           | 1817                  | 10.1                     | 18212         | 16985           | 1227                  | 6.7                      |
| TAYLOR                  | 9248          | 8204            | 1044                  | 11.3                     | 9264         | 8247            | 1017                  | 11.0                     | 9149          | 8445            | 704                   | 7.7                      |
| UNION                   | 5348          | 4851            | 497                   | 9.3                      | 5344         | 4886            | 458                   | 8.6                      | 5275          | 4988            | 287                   | 5.4                      |
| VOLUSIA                 | 252776        | 221575          | 31201                 | 12.3                     | 252612       | 222918          | 29694                 | 11.8                     | 252886        | 232314          | 20572                 | 8.1                      |
| WAKULLA                 | 15335         | 14139           | 1196                  | 7.8                      | 15385        | 14201           | 1184                  | 7.7                      | 15610         | 14735           | 875                   | 5.6                      |
| WALTON                  | 31783         | 29266           | 2517                  | 7.9                      | 32043        | 29695           | 2348                  | 7.3                      | 31677         | 29981           | 1696                  | 5.4                      |
| WASHINGTON              | 10077         | 8971            | 1106                  | 11.0                     | 10069        | 9083            | 986                   | 9.8                      | 10055         | 9309            | 746                   | 7.4                      |
| FLORIDA                 |               |                 |                       |                          |              |                 |                       |                          |               |                 |                       |                          |
| NOT SEASONALLY ADJUSTED |               |                 |                       |                          |              |                 |                       |                          |               |                 |                       |                          |
|                         | 9195000       | 8142000         | 1053000               | 11.5                     | 9200000      | 8161000         | 1039000               | 11.3                     | 9264000       | 8580000         | 684000                | 7.4                      |
| SEASONALLY ADJUSTED     |               |                 |                       |                          |              |                 |                       |                          |               |                 |                       |                          |
|                         | 9202000       | 8146000         | 1056000               | 11.5                     | 9183000      | 8148000         | 1035000               | 11.3                     | 9316000       | 8641000         | 675000                | 7.2                      |
| UNITED STATES           |               |                 |                       |                          |              |                 |                       |                          |               |                 |                       |                          |
| NOT SEASONALLY ADJUSTED |               |                 |                       |                          |              |                 |                       |                          |               |                 |                       |                          |
|                         | 153539000     | 139132000       | 14407000              | 9.4                      | 153635000    | 139088000       | 14547000              | 9.5                      | 154624000     | 144609000       | 10015000              | 6.5                      |
| SEASONALLY ADJUSTED     |               |                 |                       |                          |              |                 |                       |                          |               |                 |                       |                          |
|                         | 153877000     | 138502000       | 15375000              | 10.0                     | 153975000    | 138275000       | 15700000              | 10.2                     | 154620000     | 144144000       | 10476000              | 6.8                      |

PAGE 2 OF 2

RELEASED DECEMBER 18, 2009

NOTE: Items may not add to totals or compute to displayed percentages due to rounding. All data are subject to revision.

SOURCE: Florida Agency for Workforce Innovation, Labor Market Statistics Center, Local Area Unemployment Statistics Program, in cooperation with the U.S. Department of Labor, Bureau of Labor Statistics.

STATE OF FLORIDA  
LOCAL AREA UNEMPLOYMENT STATISTICS BY METROPOLITAN STATISTICAL AREA (MSA)  
(NOT SEASONALLY ADJUSTED)

| MSA (COUNTIES)  | NOVEMBER 2009 |            |                    |                       | OCTOBER 2009 |            |                    |                       | NOVEMBER 2008 |            |                    |                       |
|---|---------------|------------|--------------------|-----------------------|--------------|------------|--------------------|-----------------------|---------------|------------|--------------------|-----------------------|
|   | LABOR FORCE   | EMPLOYMENT | UNEMPLOYMENT LEVEL | UNEMPLOYMENT RATE (%) | LABOR FORCE  | EMPLOYMENT | UNEMPLOYMENT LEVEL | UNEMPLOYMENT RATE (%) | LABOR FORCE   | EMPLOYMENT | UNEMPLOYMENT LEVEL | UNEMPLOYMENT RATE (%) |
| BRADENTON-SARASOTA-VENICE (Manatee and Sarasota)                              | 308329        | 269528     | 38801              | 12.6                  | 307906       | 270000     | 37906              | 12.3                  | 315871        | 289600     | 26271              | 8.3                   |
| CAPE CORAL-FT. MYERS (Lee)  | 272627        | 234648     | 37979              | 13.9                  | 272031       | 234764     | 37267              | 13.7                  | 282907        | 255089     | 27818              | 9.8                   |
| DELTONA-DAYTONA BEACH-ORMOND BEACH (Volusia)                                  | 252776        | 221575     | 31201              | 12.3                  | 252612       | 222918     | 29694              | 11.8                  | 252886        | 232314     | 20572              | 8.1                   |
| FT. WALTON BEACH-CRESTVIEW-DESTIN (Okaloosa)                                  | 95848         | 88043      | 7805               | 8.1                   | 95767        | 88609      | 7158               | 7.5                   | 97323         | 91982      | 5341               | 5.5                   |
| GAINESVILLE (Alachua and Gilchrist)   | 140287        | 129056     | 11231              | 8.0                   | 140415       | 130107     | 10308              | 7.3                   | 141754        | 134725     | 7029               | 5.0                   |
| JACKSONVILLE (Baker, Clay, Duval, Nassau, and St. Johns)                      | 684118        | 607337     | 76781              | 11.2                  | 682500       | 609071     | 73429              | 10.8                  | 686523        | 639225     | 47298              | 6.9                   |
| LAKELAND-WINTER HAVEN (Polk)  | 274252        | 238850     | 35402              | 12.9                  | 273217       | 238895     | 34322              | 12.6                  | 275550        | 252844     | 22706              | 8.2                   |
| MIAMI-FT. LAUDERDALE-POMPANO BEACH (Broward, Miami-Dade, and Palm Beach)      | 2857874       | 2554977    | 302897             | 10.6                  | 2871308      | 2554636    | 316672             | 11.0                  | 2858094       | 2668357    | 189737             | 6.6                   |
| Ft. Lauderdale-Pompano Beach-Deerfield Beach Metropolitan Division (Broward)  | 1002039       | 900950     | 101089             | 10.1                  | 1003017      | 905394     | 97623              | 9.7                   | 1013155       | 947518     | 65637              | 6.5                   |
| Miami-Miami Beach-Kendall Metropolitan Division (Miami-Dade)                  | 1226918       | 1098429    | 128489             | 10.5                  | 1242228      | 1095203    | 147025             | 11.8                  | 1214031       | 1139072    | 74959              | 6.2                   |
| West Palm Beach-Boca Raton-Boynton Beach Metropolitan Division (Palm Beach)   | 628917        | 555598     | 73319              | 11.7                  | 626063       | 554039     | 72024              | 11.5                  | 630908        | 581767     | 49141              | 7.8                   |
| NAPLES-MARCO ISLAND (Collier)   | 146650        | 128588     | 18062              | 12.3                  | 144816       | 126637     | 18179              | 12.6                  | 152761        | 140742     | 12019              | 7.9                   |
| OCALA (Marion)  | 139170        | 119868     | 19302              | 13.9                  | 138847       | 120194     | 18653              | 13.4                  | 140675        | 127182     | 13493              | 9.6                   |
| ORLANDO-KISSIMMEE (Lake, Orange, Osceola, and Seminole)                       | 1110095       | 978744     | 131351             | 11.8                  | 1114498      | 986714     | 127784             | 11.5                  | 1123800       | 1040765    | 83035              | 7.4                   |
| PALM BAY-MELBOURNE-TITUSVILLE (Brevard)                                       | 265566        | 233892     | 31674              | 11.9                  | 265215       | 234849     | 30366              | 11.4                  | 266808        | 245539     | 21269              | 8.0                   |
| PALM COAST (Flagler)  | 31278         | 26023      | 5255               | 16.8                  | 31180        | 26138      | 5042               | 16.2                  | 32129         | 28552      | 3577               | 11.1                  |
| PANAMA CITY-LYNN HAVEN-PANAMA CITY BEACH (Bay)                                | 86849         | 77528      | 9321               | 10.7                  | 87456        | 79064      | 8392               | 9.6                   | 88244         | 81793      | 6451               | 7.3                   |
| PENSACOLA-FERRY PASS-BRENT (Escambia and Santa Rosa)                          | 209547        | 187397     | 22150              | 10.6                  | 208637       | 188264     | 20373              | 9.8                   | 210422        | 195910     | 14512              | 6.9                   |
| PORT ST. LUCIE (Martin and St. Lucie)   | 188803        | 162551     | 26252              | 13.9                  | 187996       | 162034     | 25962              | 13.8                  | 187598        | 169342     | 18256              | 9.7                   |
| PUNTA GORDA (Charlotte)   | 68839         | 59881      | 8958               | 13.0                  | 68697        | 59944      | 8753               | 12.7                  | 69187         | 62598      | 6589               | 9.5                   |
| SEBASTIAN-VERO BEACH (Indian River)   | 60763         | 51865      | 8898               | 14.6                  | 60807        | 51730      | 9077               | 14.9                  | 61800         | 55957      | 5843               | 9.5                   |
| TALLAHASSEE (Gadsden, Jefferson, Leon, and Wakulla)                           | 190545        | 175021     | 15524              | 8.1                   | 190056       | 175786     | 14270              | 7.5                   | 192767        | 182391     | 10376              | 5.4                   |
| TAMPA-ST. PETERSBURG-CLEARWATER (Hernando, Hillsborough, Pasco, and Pinellas) | 1313865       | 1152815    | 161050             | 12.3                  | 1311743      | 1157219    | 154524             | 11.8                  | 1331508       | 1226101    | 105407             | 7.9                   |
| FLORIDA   |               |            |                    |                       |              |            |                    |                       |               |            |                    |                       |
| NOT SEASONALLY ADJUSTED   | 9195000       | 8142000    | 1053000            | 11.5                  | 9200000      | 8161000    | 1039000            | 11.3                  | 9264000       | 8580000    | 684000             | 7.4                   |
| SEASONALLY ADJUSTED   | 9202000       | 8146000    | 1056000            | 11.5                  | 9183000      | 8148000    | 1035000            | 11.3                  | 9316000       | 8641000    | 675000             | 7.2                   |
| UNITED STATES   |               |            |                    |                       |              |            |                    |                       |               |            |                    |                       |
| NOT SEASONALLY ADJUSTED   | 153539000     | 139132000  | 14407000           | 9.4                   | 153635000    | 139088000  | 14547000           | 9.5                   | 154624000     | 144609000  | 10015000           | 6.5                   |
| SEASONALLY ADJUSTED   | 153877000     | 138502000  | 15375000           | 10.0                  | 153975000    | 138275000  | 15700000           | 10.2                  | 154620000     | 144144000  | 10476000           | 6.8                   |

RELEASED DECEMBER 18, 2009

NOTE: Items may not add to totals or compute to displayed percentages due to rounding. All data are subject to revis

STATE OF FLORIDA  
COUNTIES RANKED BY UNEMPLOYMENT RATE  
(NOT SEASONALLY ADJUSTED)

NOVEMBER 2009  
(PRELIMINARY)

RELEASED 12/18/2009

| UNEMPLOYMENT |              |          | UNEMPLOYMENT |               |          |
|--------------|--------------|----------|--------------|---------------|----------|
| RANK         | COUNTY       | RATE (%) | RANK         | COUNTY        | RATE (%) |
| 1            | FLAGLER      | 16.8     | 35           | DESOTO        | 11.3     |
| 2            | HENDRY       | 14.9     | 36           | WASHINGTON    | 11.0     |
| 3            | HERNANDO     | 14.7     | 37           | SEMINOLE      | 10.9     |
| 4            | ST. LUCIE    | 14.7     | 38           | SUWANNEE      | 10.9     |
| 5            | INDIAN RIVER | 14.6     | 39           | NASSAU        | 10.9     |
| 6            | LEE          | 13.9     | 40           | ESCAMBIA      | 10.9     |
| 7            | MARION       | 13.9     | 41           | BAY           | 10.7     |
| 8            | OKEECHOBEE   | 13.5     | 42           | GULF          | 10.5     |
| 9            | OSCEOLA      | 13.3     | 43           | COLUMBIA      | 10.5     |
| 10           | PASCO        | 13.2     | 44           | MIAMI-DADE    | 10.5     |
| 11           | DIXIE        | 13.1     | 45           | GILCHRIST     | 10.5     |
| 12           | CHARLOTTE    | 13.0     | 46           | CLAY          | 10.4     |
| 13           | MADISON      | 13.0     | 47           | GADSDEN       | 10.1     |
| 14           | MANATEE      | 12.9     | 48           | BROWARD       | 10.1     |
| 15           | POLK         | 12.9     | 49           | SANTA ROSA    | 9.9      |
| 16           | PUTNAM       | 12.8     | 50           | GLADES        | 9.8      |
| 17           | LAKE         | 12.7     | 51           | SUMTER        | 9.7      |
| 18           | CITRUS       | 12.6     | 52           | ST. JOHNS     | 9.7      |
| 19           | HAMILTON     | 12.4     |              | UNITED STATES | 9.4      |
| 20           | MARTIN       | 12.4     | 53           | UNION         | 9.3      |
| 21           | VOLUSIA      | 12.3     | 54           | CALHOUN       | 9.3      |
| 22           | LEVY         | 12.3     | 55           | JEFFERSON     | 8.9      |
| 23           | COLLIER      | 12.3     | 56           | BRADFORD      | 8.9      |
| 24           | SARASOTA     | 12.3     | 57           | FRANKLIN      | 8.8      |
| 25           | HARDEE       | 12.2     | 58           | LAFAYETTE     | 8.4      |
| 26           | HILLSBOROUGH | 12.1     | 59           | OKALOOSA      | 8.1      |
| 27           | BREVARD      | 11.9     | 60           | HOLMES        | 8.1      |
| 28           | DUVAL        | 11.7     | 61           | WALTON        | 7.9      |
| 29           | PINELLAS     | 11.7     | 62           | LEON          | 7.9      |
| 30           | HIGHLANDS    | 11.7     | 63           | ALACHUA       | 7.9      |
| 31           | ORANGE       | 11.7     | 64           | WAKULLA       | 7.8      |
| 32           | PALM BEACH   | 11.7     | 65           | JACKSON       | 7.8      |
| 33           | BAKER        | 11.6     | 66           | MONROE        | 7.3      |
|              | FLORIDA      | 11.5     | 67           | LIBERTY       | 6.1      |
| 34           | TAYLOR       | 11.3     |              |               |          |

NOTE: All data are subject to revision.

Source: Florida Agency for Workforce Innovation, Labor Market Statistics Center, Local Area Unemployment Statistics Program, in cooperation with the U.S. Department of Labor, Bureau of Labor Statistics.

STATE OF FLORIDA  
 METROPOLITAN STATISTICAL AREAS (MSAs) AND METROPOLITAN DIVISIONS (MDs)  
 RANKED BY UNEMPLOYMENT RATE  
 (NOT SEASONALLY ADJUSTED)  
 NOVEMBER 2009 (Preliminary)

|   |             |
|---|-------------|
| 1. Palm Coast MSA                                   | 16.8 %      |
| 2. Sebastian-Vero Beach MSA                         | 14.6        |
| 3. Cape Coral-Ft. Myers MSA                         | 13.9        |
| 4. Port St. Lucie MSA                               | 13.9        |
| 5. Ocala MSA  | 13.9        |
| 6. Punta Gorda MSA                                  | 13.0        |
| 7. Lakeland-Winter Haven MSA                        | 12.9        |
| 8. Bradenton-Sarasota-Venice MSA                    | 12.6        |
| 9. Deltona-Daytona Beach-Ormond Beach MSA           | 12.3        |
| 10. Naples-Marco Island MSA                         | 12.3        |
| 11. Tampa-St. Petersburg-Clearwater MSA             | 12.3        |
| 12. Palm Bay-Melbourne-Titusville MSA               | 11.9        |
| 13. Orlando-Kissimmee MSA                           | 11.8        |
| 14. West Palm Beach-Boca Raton-Boynton Beach MD     | 11.7        |
| <b>Florida</b>                                      | <b>11.5</b> |
| 15. Jacksonville MSA                                | 11.2        |
| 16. Panama City-Lynn Haven-Panama City Beach MSA    | 10.7        |
| 17. Miami-Ft. Lauderdale-Pompano Beach MSA          | 10.6        |
| 18. Pensacola-Ferry Pass-Brent MSA                  | 10.6        |
| 19. Miami-Miami Beach-Kendall MD                    | 10.5        |
| 20. Ft. Lauderdale-Pompano Beach-Deerfield Beach MD | 10.1        |
| <b>United States</b>                                | <b>9.4</b>  |
| 21. Tallahassee MSA                                 | 8.1         |
| 22. Ft. Walton Beach-Crestview-Destin MSA           | 8.1         |
| 23. Gainesville MSA                                 | 8.0         |

Released December 18, 2009

NOTE: All data are subject to revision.

Source: Florida Agency for Workforce Innovation, Labor Market Statistics Center, Local Area Unemployment Statistics Program, in cooperation with the U.S. Department of Labor, Bureau of Labor Statistics.

TOTAL NONAGRICULTURAL EMPLOYMENT  
FLORIDA (Not Seasonally Adjusted)

| Area  | November<br>2009 | October<br>2009 | November<br>2008 | Over-the-Month<br>Change |         | Over-the-Year<br>Change |         |
|---|------------------|-----------------|------------------|--------------------------|---------|-------------------------|---------|
|   |                  |                 |                  | Level                    | Percent | Level                   | Percent |
| Statewide                                       | 7,364,200        | 7,342,200       | 7,650,700        | +22,000                  | +0.3%   | -286,500                | -3.7%   |
| Bradenton-Sarasota-Venice MSA                   | 249,100          | 248,200         | 264,000          | +900                     | +0.4%   | -14,900                 | -5.6%   |
| Cape Coral-Ft. Myers MSA                        | 195,500          | 194,800         | 208,900          | +700                     | +0.4%   | -13,400                 | -6.4%   |
| Deltona-Daytona Beach-Ormond Beach MSA          | 158,700          | 158,500         | 163,300          | +200                     | +0.1%   | -4,600                  | -2.8%   |
| Ft. Lauderdale-Pompano Beach-Deerfield Beach MD | 738,100          | 737,200         | 762,900          | +900                     | +0.1%   | -24,800                 | -3.3%   |
| Ft. Walton Beach-Crestview-Destin MSA           | 78,800           | 78,900          | 81,200           | -100                     | -0.1%   | -2,400                  | -3.0%   |
| Gainesville MSA                                 | 132,500          | 132,600         | 135,900          | -100                     | -0.1%   | -3,400                  | -2.5%   |
| Jacksonville MSA                                | 594,500          | 592,200         | 614,600          | +2,300                   | +0.4%   | -20,100                 | -3.3%   |
| Lakeland-Winter Haven MSA                       | 199,200          | 198,100         | 206,900          | +1,100                   | +0.6%   | -7,700                  | -3.7%   |
| Miami-Ft. Lauderdale-Pompano Beach MSA          | 2,280,500        | 2,269,400       | 2,345,600        | +11,100                  | +0.5%   | -65,100                 | -2.8%   |
| Miami-Miami Beach-Kendall MD                    | 1,018,700        | 1,013,100       | 1,043,100        | +5,600                   | +0.6%   | -24,400                 | -2.3%   |
| Naples-Marco Island MSA                         | 114,500          | 112,400         | 123,800          | +2,100                   | +1.9%   | -9,300                  | -7.5%   |
| Ocala MSA                                       | 97,500           | 97,000          | 101,800          | +500                     | +0.5%   | -4,300                  | -4.2%   |
| Orlando-Kissimmee MSA                           | 1,018,500        | 1,019,100       | 1,062,500        | -600                     | -0.1%   | -44,000                 | -4.1%   |
| Palm Bay-Melbourne-Titusville MSA               | 197,200          | 196,700         | 203,200          | +500                     | +0.3%   | -6,000                  | -3.0%   |
| Palm Coast MSA                                  | 16,900           | 16,900          | 18,200           | +0                       | +0.0%   | -1,300                  | -7.1%   |
| Panama City-Lynn Haven-Panama City Beach MSA    | 71,200           | 72,000          | 73,900           | -800                     | -1.1%   | -2,700                  | -3.7%   |
| Pensacola-Ferry Pass-Brent MSA                  | 161,000          | 160,800         | 165,600          | +200                     | +0.1%   | -4,600                  | -2.8%   |
| Port St. Lucie MSA                              | 122,400          | 121,500         | 125,100          | +900                     | +0.7%   | -2,700                  | -2.2%   |
| Punta Gorda MSA                                 | 40,600           | 40,300          | 41,900           | +300                     | +0.7%   | -1,300                  | -3.1%   |
| Sebastian-Vero Beach MSA                        | 43,200           | 43,300          | 46,300           | -100                     | -0.2%   | -3,100                  | -6.7%   |
| Tallahassee MSA                                 | 173,300          | 172,800         | 177,100          | +500                     | +0.3%   | -3,800                  | -2.1%   |
| Tampa-St. Petersburg-Clearwater MSA             | 1,159,700        | 1,156,200       | 1,211,600        | +3,500                   | +0.3%   | -51,900                 | -4.3%   |
| West Palm Beach-Boca Raton-Boynton Beach MD     | 523,700          | 519,100         | 539,600          | +4,600                   | +0.9%   | -15,900                 | -2.9%   |

Note: Employment estimates have been rounded to the nearest hundred. Sum of detail may not equal totals due to rounding or the exclusion of certain industries from publication. All data are subject to revision. Released December 18, 2009.