



Charlie Crist
Governor
Cynthia Lorenzo
Interim Director

FOR IMMEDIATE RELEASE
EMBARGOED: March 27, 2009, 10:00AM

CONTACT: Robby Cunningham
(850) 245-7130

Florida's February Employment Figures Released

www.employflorida.com

TALLAHASSEE – Florida's seasonally adjusted unemployment rate for February 2009 is 9.4 percent. This represents 874,000 jobless out of a labor force of 9,252,000. The unemployment rate is 0.6 percentage point higher than the revised January rate of 8.8 percent and is up 4.2 percentage points from the February 2008 rate. The state's current unemployment rate is 1.3 percentage points higher than the national unemployment rate of 8.1 percent.

Florida's February 2009 unemployment rate is the highest since April 1976, when the rate was also 9.4 percent. The seasonally adjusted unemployment rate for Florida (using the current methodology) peaked at 9.7 percent in January, February, and March of 1976. A different methodology was used to calculate unemployment rates prior to 1976; during that time, the rate reached a high of 11.9 percent in May 1975.

Florida's total nonagricultural employment in February 2009 is 7,503,400, representing a job loss of 399,400, or -5.1 percent compared to February 2008. This is slower than the national rate for February which is -3.0 percent. The February 2009 rate of job loss continues the trend of over-the-year declines that began in August 2007 primarily due to declines in construction jobs.

"To help reinvigorate Florida's economy, Governor Charlie Crist recently announced the infusion of \$165 million in federal economic stimulus funds to directly benefit both job seekers and businesses," said Agency Interim Director Cynthia Lorenzo. "These funds will provide critically-needed training and job placement services including summer employment opportunities for young people and assistance for Floridians at One-Stop Career Centers around the state."

Additionally, the Agency has available nearly \$1.4 billion in federal stimulus funds for Florida's unemployment compensation program including benefits for unemployment compensation recipients. The Agency began mailing and electronically depositing an additional \$25 weekly in federal stimulus funds for qualified unemployment compensation recipients last week. Information on the \$165 million in federal workforce stimulus funds can be found here: <http://www.flgov.com/release/10616>, and information on the additional \$25 weekly federal unemployment compensation payments can be found here: <http://www.flgov.com/release/10620>. For more information about Florida's use of the federal recovery dollars made available through the federal American Recovery and Reinvestment Act of 2009, please visit www.FlaRecovery.com.

Floridians looking for work may want to consider the state's *Ready to Work Pilot Program*, which can give high school-age or adult participants a competitive edge in their job search by providing the opportunity to earn a credential demonstrating skills necessary for success in the workplace. Participants receive an assessment of basic workforce skills, including reading for information, applied mathematics and locating information, and those who meet the requirements will earn the *Ready to Work* credential. People in need of additional skills enroll in a free self-paced course for help in those areas.

The following counties currently offer the *Ready to Work Pilot Program*: Alachua, Baker, Bradford, Charlotte, Citrus, Clay, Collier, Duval, Gadsden, Glades, Hendry, Hernando, Indian River, Lee, Leon, Levy, Marion, Martin, Nassau, Okeechobee, Okaloosa, Pasco, Polk, Putnam, St. Lucie, St. Johns, Wakulla and Walton Counties. For more information, call 1-866-429-2334 or e-mail ReadyToWork@fldoe.org.

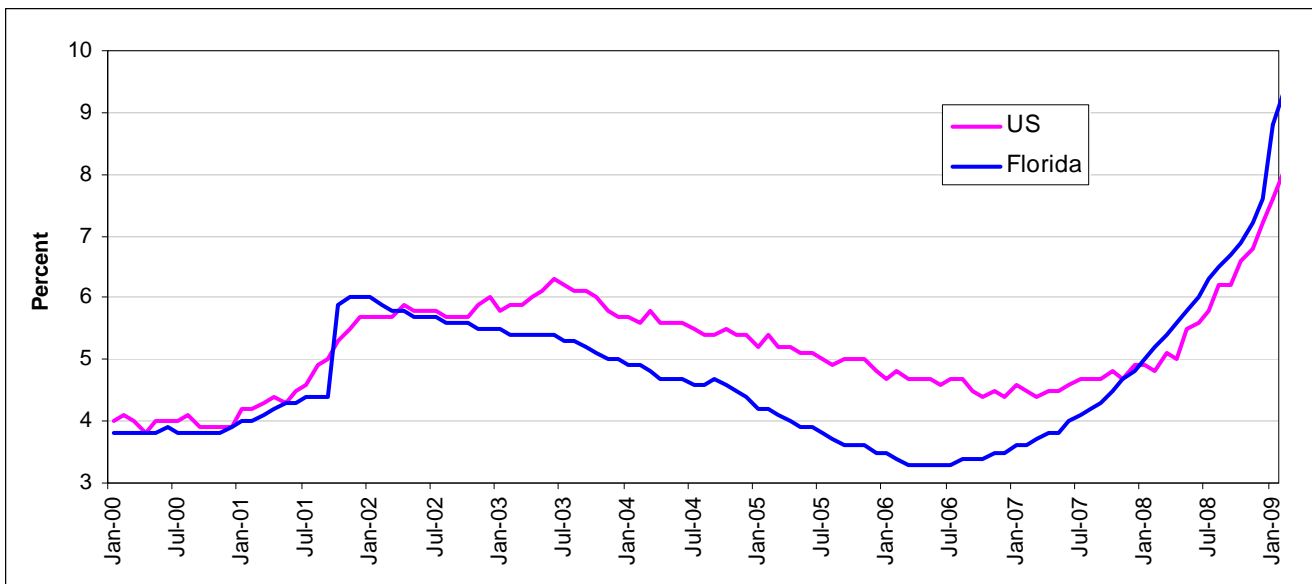
Floridians are also encouraged to utilize the Employ Florida Marketplace, the state's powerful online labor exchange tool that provides employers, job seekers, students, training providers and workforce professionals with comprehensive and convenient workforce services at no cost. Employers can post job openings and job seekers can post resumes at www.employflorida.com. The Employ Florida Marketplace currently lists more than 206,000 job opportunities in Florida.

Florida's workforce system provides critical programs and services to job seekers and businesses alike. Such services offered throughout the state include:

- **One-Stop Career Centers** – Florida's nearly 90 One-Stop Career Centers, locally operated by Regional Workforce Boards, provide local access to job placement services, local workforce information and job training opportunities. Follow this link for a [Map of Florida One-Stop Career Centers](http://www.floridajobs.org/onestop/onestopdir/index.htm). (<http://www.floridajobs.org/onestop/onestopdir/index.htm>)
- **Employ Florida Marketplace** - The Employ Florida Marketplace Online Job Bank provides 24/7 access to a wide variety of local, state and national job openings. Follow this link to access the [Employ Florida Marketplace](http://www.employflorida.com/). (<http://www.employflorida.com/>)
- **Mobile One-Stop Career Centers** – Florida's Mobile One-Stop Career Centers allow citizens in rural areas, at job fairs and during emergency situations to access critical workforce information and services.
- **Labor Market Information** – The Agency for Workforce Innovation's Labor Market Statistics Center produces data, such as employment, unemployment and wage information, that assist workforce/economic development, education, employers and job seekers. These statistics assist with economic analysis, business recruitment, career counseling and other critical business decision-making. Follow this link for information about the Agency's [Labor Market Statistics Center](http://www.labormarketinfo.com/). (<http://www.labormarketinfo.com/>.)
- **Work Opportunity Tax Credit** - The Work Opportunity Tax Credit offers a financial incentive to private, for-profit employers to hire individuals from certain targeted groups, who experience high rates of unemployment due to a variety of employment barriers. Follow this link for information about the [Work Opportunity Tax Credit](http://www.floridajobs.org/workforce/wotc.html). (<http://www.floridajobs.org/workforce/wotc.html>)

For more information on these and other Agency for Workforce Innovation programs, go to www.FloridaJobs.org.

United States and Florida Unemployment Rates (seasonally adjusted)



Source: Florida Agency for Workforce Innovation, Labor Market Statistics Center, Local Area Unemployment Statistics Program, in cooperation with the U.S. Department of Labor, Bureau of Labor Statistics.

Florida's Nonagricultural Employment by Industry (Seasonally Adjusted)

- The number of jobs in Florida is down 399,400 in February 2009 compared to a year ago. Construction, reacting to continued declines in the housing market, lost 114,600 jobs over the year (-20.7 percent). Construction losses account for over 27 percent of job losses in the state.
- Professional and business services (-102,100 jobs, -8.7 percent); trade, transportation, and utilities (-86,500 jobs, -5.4 percent); manufacturing (-35,100 jobs, -9.1 percent); leisure and hospitality (-33,100 jobs, -3.5 percent); financial activities (-18,300 jobs, -3.4 percent); other services (-13,500 jobs, -3.9 percent); information (-11,500 jobs, -7.2 percent); and total government (-3,600 jobs, -0.3 percent) have over-the-year declines.
- These industry job losses are partially due to weakness in specialty trade contractors; employment services; motor vehicle and parts dealers; fabricated metal product manufacturing; food services and drinking places; credit intermediation; repair and maintenance; publishing; and local government.
- Education and health services (+19,200 jobs, +1.8 percent) is the only sector gaining jobs among Florida's major industries. Much of the increase in education and health services is due to growth in nursing and residential care facilities.

Local Area Unemployment Statistics (Not Seasonally Adjusted)

- In February 2009, Liberty County has the state's lowest unemployment rate (5.5 percent), followed by Alachua County (6.0 percent); Leon and Monroe counties (6.2 percent); Jackson County (6.9 percent); and Union County (7.0 percent).
- Flagler County, at 14.2 percent, has the highest unemployment rate in Florida in February, followed by Hernando and St. Lucie counties (12.7 percent); Marion County (12.3 percent); Lee County (12.0 percent); and Charlotte County (11.8 percent). Flagler County's high unemployment rate is mainly due to manufacturing layoffs and continued weakness in construction. There were 27 Florida counties with double-digit unemployment rates in February 2009.

Area Nonagricultural Employment by Industry (Not Seasonally Adjusted)

- All metro areas in the state lost jobs over the year in February 2009. Metro areas with the largest annual declines include Miami-Ft. Lauderdale-Pompano Beach (-97,900 jobs, -4.1 percent); Orlando-Kissimmee (-56,900 jobs, -5.2 percent); and Tampa-St. Petersburg-Clearwater (-51,400 jobs, -4.1 percent). Cape Coral-Ft. Myers MSA has the highest rate of job loss at -9.2 percent over the year.
- Metro areas with the smallest annual declines include Ft. Walton Beach-Crestview-Destin (-1,500 jobs, -1.8 percent) and Panama City-Lynn Haven-Panama City Beach (-2,000 jobs, -2.7 percent). Ft. Walton Beach-Crestview-Destin MSA has the smallest rate of job decline, at -1.8 percent over the year.

Note: These unemployment and job growth rates are estimates, which are primarily based on surveys created and mandated by the US Bureau of Labor Statistics in cooperation with the Florida Agency for Workforce Innovation.

The unemployment rate is derived from Florida household surveys conducted by the US Census Bureau under contract with the US Bureau of Labor Statistics. The job growth rate is derived from Florida employer surveys conducted by the US Bureau of Labor Statistics.

Both estimates are revised on a monthly basis. In addition, these estimates are benchmarked (revised) annually based on actual counts from Florida's Unemployment Compensation tax records and other data.

###

An equal opportunity employer/program. Auxiliary aids and services are available upon request to individuals with disabilities. All voice telephone numbers on this document may be reached by persons using TTY/TDD equipment via the Florida Relay Service at 711.

The Agency for Workforce Innovation is Florida's lead workforce agency and directly administers the state's various workforce and unemployment programs and the Office of Early Learning. Workforce development policy and guidance are provided by Workforce Florida, Inc. Partnering together, along with the state's 24 Regional Workforce Boards that deliver services through nearly 90 One-Stop Career Centers around the state, they compose the Employ Florida network.

The next Florida Employment and Unemployment release will be on April 17, 2009 at 10:00 A.M.

Agency for Workforce Innovation

The Caldwell Building, Suite 100•107 East Madison Street•Tallahassee, Florida•32399-4120
Telephone (850) 245-7105•Fax (850) 921-3223•TTY/TDD 1-800-955-8771-Voice 1-800-955-8770

www.floridajobs.org

LABOR FORCE STATUS OF THE CIVILIAN NONINSTITUTIONAL POPULATION
RELEASE DATE: MARCH 27, 2009

SEASONALLY ADJUSTED

| | Current Month February 2009 | Month Ago January 2009 | Year Ago February 2008 | Over-the-Month Change | | Over-the-Year Change | |
|---|--------------------------------|---------------------------|---------------------------|--------------------------|---------|-------------------------|---------|
| | | | | Level | Percent | Level | Percent |
| STATE OF FLORIDA | | | | | | | |
| Civilian Noninstitutional Population 16+ | 14,525,000 | 14,519,000 | 14,407,000 | 6,000 | ** | 118,000 | 0.8 |
| Civilian Labor Force | 9,252,000 | 9,268,000 | 9,164,000 | -16,000 | -0.2 | 88,000 | 1.0 |
| Employment | 8,378,000 | 8,454,000 | 8,688,000 | -76,000 | -0.9 | -310,000 | -3.6 |
| Unemployment | 874,000 | 814,000 | 476,000 | 60,000 | 7.4 | 398,000 | 83.6 |
| Unemployment Rate (%) | 9.4 | 8.8 | 5.2 | 0.6 | -- | 4.2 | -- |

UNITED STATES

| | | | | | | | |
|---|-------------|-------------|-------------|----------|------|------------|------|
| Civilian Noninstitutional Population 16+ | 234,913,000 | 234,739,000 | 232,809,000 | 174,000 | 0.1 | 2,104,000 | 0.9 |
| Civilian Labor Force | 154,214,000 | 153,716,000 | 153,498,000 | 498,000 | 0.3 | 716,000 | 0.5 |
| Employment | 141,748,000 | 142,099,000 | 146,075,000 | -351,000 | -0.2 | -4,327,000 | -3.0 |
| Unemployment | 12,467,000 | 11,616,000 | 7,423,000 | 851,000 | 7.3 | 5,044,000 | 68.0 |
| Unemployment Rate (%) | 8.1 | 7.6 | 4.8 | 0.5 | -- | 3.3 | -- |

NOT SEASONALLY ADJUSTED

| | Current Month February 2009 | Month Ago January 2009 | Year Ago February 2008 | Over-the-Month Change | | Over-the-Year Change | |
|---|--------------------------------|---------------------------|---------------------------|--------------------------|---------|-------------------------|---------|
| | | | | Level | Percent | Level | Percent |
| STATE OF FLORIDA | | | | | | | |
| Civilian Noninstitutional Population 16+ | 14,525,000 | 14,519,000 | 14,407,000 | 6,000 | ** | 118,000 | 0.8 |
| Civilian Labor Force | 9,182,000 | 9,193,000 | 9,103,000 | -11,000 | -0.1 | 79,000 | 0.9 |
| Employment | 8,322,000 | 8,372,000 | 8,665,000 | -50,000 | -0.6 | -343,000 | -4.0 |
| Unemployment | 861,000 | 821,000 | 438,000 | 40,000 | 4.9 | 423,000 | 96.6 |
| Unemployment Rate (%) | 9.4 | 8.9 | 4.8 | 0.5 | -- | 4.6 | -- |

UNITED STATES

| | | | | | | | |
|---|-------------|-------------|-------------|----------|------|------------|------|
| Civilian Noninstitutional Population 16+ | 234,913,000 | 234,739,000 | 232,809,000 | 174,000 | 0.1 | 2,104,000 | 0.9 |
| Civilian Labor Force | 153,804,000 | 153,445,000 | 152,503,000 | 359,000 | 0.2 | 1,301,000 | 0.9 |
| Employment | 140,105,000 | 140,436,000 | 144,550,000 | -331,000 | -0.2 | -4,445,000 | -3.1 |
| Unemployment | 13,699,000 | 13,009,000 | 7,953,000 | 690,000 | 5.3 | 5,746,000 | 72.2 |
| Unemployment Rate (%) | 8.9 | 8.5 | 5.2 | 0.4 | -- | 3.7 | -- |

** = Less than 0.05%

Note: All estimates except unemployment rates are rounded to the nearest thousand. Items may not add to totals or compute to displayed percentages due to rounding. All data are subject to revision.

Source: Florida Agency for Workforce Innovation, Labor Market Statistics Center, Local Area Unemployment Statistics Program, in cooperation with the U.S Department of Labor, Bureau of Labor Statistics.

**Nonagricultural Employment in Florida
Seasonally Adjusted (in thousands)**

| | February ^P 2009 | January ^r 2009 | February 2008 | Over-the-Month Change | | Over-the-Year Change | |
|---|-------------------------------|------------------------------|------------------|--------------------------|---------|-------------------------|---------|
| | | | | Level | Percent | Level | Percent |
| Total Nonagricultural Employment | 7,503.4 | 7,552.9 | 7,902.8 | -49.5 | -0.7 | -399.4 | -5.1 |
| Construction | 440.3 | 460.1 | 554.9 | -19.8 | -4.3 | -114.6 | -20.7 |
| Manufacturing | 348.7 | 355.4 | 383.8 | -6.7 | -1.9 | -35.1 | -9.1 |
| Trade, Transportation, and Utilities | 1,527.9 | 1,531.2 | 1,614.4 | -3.3 | -0.2 | -86.5 | -5.4 |
| Wholesale Trade | 342.1 | 340.2 | 352.7 | 1.9 | 0.6 | -10.6 | -3.0 |
| Retail Trade | 950.2 | 953.9 | 1,010.5 | -3.7 | -0.4 | -60.3 | -6.0 |
| Transportation, Warehousing, and Utilities | 235.6 | 237.1 | 251.2 | -1.5 | -0.6 | -15.6 | -6.2 |
| Information | 148.2 | 149.0 | 159.7 | -0.8 | -0.5 | -11.5 | -7.2 |
| Financial Activities | 517.7 | 518.9 | 536.0 | -1.2 | -0.2 | -18.3 | -3.4 |
| Finance and Insurance | 342.3 | 345.6 | 360.4 | -3.3 | -1.0 | -18.1 | -5.0 |
| Real Estate, Rental, and Leasing | 175.4 | 173.3 | 175.6 | 2.1 | 1.2 | -0.2 | -0.1 |
| Professional and Business Services | 1,069.7 | 1,081.3 | 1,171.8 | -11.6 | -1.1 | -102.1 | -8.7 |
| Professional and Technical Services | 435.3 | 440.4 | 463.6 | -5.1 | -1.2 | -28.3 | -6.1 |
| Management of Companies and Enterprises | 80.3 | 81.2 | 82.0 | -0.9 | -1.1 | -1.7 | -2.1 |
| Administrative and Waste Services | 554.1 | 559.7 | 626.2 | -5.6 | -1.0 | -72.1 | -11.5 |
| Education and Health Services | 1,061.0 | 1,064.2 | 1,041.8 | -3.2 | -0.3 | 19.2 | 1.8 |
| Educational Services | 139.0 | 140.6 | 136.9 | -1.6 | -1.1 | 2.1 | 1.5 |
| Health Care and Social Assistance | 922.0 | 923.6 | 904.9 | -1.6 | -0.2 | 17.1 | 1.9 |
| Leisure and Hospitality | 924.9 | 921.9 | 958.0 | 3.0 | 0.3 | -33.1 | -3.5 |
| Arts, Entertainment, and Recreation | 179.9 | 177.5 | 187.2 | 2.4 | 1.4 | -7.3 | -3.9 |
| Accommodation and Food Services | 745.0 | 744.4 | 770.8 | 0.6 | 0.1 | -25.8 | -3.3 |
| Other Services | 331.4 | 331.8 | 344.9 | -0.4 | -0.1 | -13.5 | -3.9 |
| Total Government | 1,127.3 | 1,132.8 | 1,130.9 | -5.5 | -0.5 | -3.6 | -0.3 |
| Local Government | 781.2 | 786.1 | 785.5 | -4.9 | -0.6 | -4.3 | -0.5 |

^P = preliminary, ^r = revised

* = less than 0.1

Note: Sum of detail may not equal totals due to rounding or the exclusion of certain industries from publication. All data are subject to revision.

Released March 27, 2009.

Source: Florida Agency for Workforce Innovation, Labor Market Statistics Center, Current Employment Statistics Program in cooperation with the U.S. Department of Labor, Bureau of Labor Statistics.

**NONAGRICULTURAL EMPLOYMENT IN FLORIDA
STATEWIDE (Not Seasonally Adjusted)**

Released March 27, 2009

| Industry Title | February 2009 | January 2009 | February 2008 | Change from | | | |
|---|------------------|-----------------|------------------|-------------------------------|---------------------|-------------------------------|---------------------|
| | | | | Jan 2009 to Feb 2009 Level | Feb 2009 Percent | Feb 2008 to Feb 2009 Level | Feb 2009 Percent |
| Total Nonagricultural Employment | 7,520,600 | 7,525,100 | 7,927,800 | -4,500 | -0.1% | -407,200 | -5.1% |
| Total Private | 6,371,100 | 6,380,900 | 6,776,000 | -9,800 | -0.2% | -404,900 | -6.0% |
| Goods Producing | 792,200 | 816,700 | 939,700 | -24,500 | -3.0% | -147,500 | -15.7% |
| Mining and Logging | 6,300 | 6,300 | 6,600 | 0 | 0.0% | -300 | -4.5% |
| Mining, except Oil and Gas | 3,700 | 3,700 | 4,100 | 0 | 0.0% | -400 | -9.8% |
| Construction | 437,700 | 456,300 | 549,300 | -18,600 | -4.1% | -111,600 | -20.3% |
| Construction of Buildings | 90,600 | 96,700 | 113,200 | -6,100 | -6.3% | -22,600 | -20.0% |
| Heavy and Civil Engineering Construction | 57,800 | 60,900 | 71,000 | -3,100 | -5.1% | -13,200 | -18.6% |
| Specialty Trade Contractors | 289,300 | 298,700 | 365,100 | -9,400 | -3.1% | -75,800 | -20.8% |
| Building Equipment Contractors | 125,000 | 127,600 | 151,100 | -2,600 | -2.0% | -26,100 | -17.3% |
| Manufacturing | 348,200 | 354,100 | 383,800 | -5,900 | -1.7% | -35,600 | -9.3% |
| Durable Goods | 235,100 | 238,600 | 257,700 | -3,500 | -1.5% | -22,600 | -8.8% |
| Fabricated Metal Product Manufacturing | 34,700 | 34,900 | 39,500 | -200 | -0.6% | -4,800 | -12.2% |
| Computer and Electronic Product Manufacturing | 47,000 | 47,000 | 48,600 | 0 | 0.0% | -1,600 | -3.3% |
| Communications Equipment Manufacturing | 8,000 | 8,100 | 8,500 | -100 | -1.2% | -500 | -5.9% |
| Transportation Equipment Manufacturing | 41,000 | 41,200 | 43,700 | -200 | -0.5% | -2,700 | -6.2% |
| Aerospace Product and Parts Manufacturing | 20,000 | 20,200 | 19,900 | -200 | -1.0% | 100 | 0.5% |
| Miscellaneous Durable Goods Manufacturing | 29,600 | 29,600 | 30,800 | 0 | 0.0% | -1,200 | -3.9% |
| Nondurable Goods | 113,100 | 115,500 | 126,100 | -2,400 | -2.1% | -13,000 | -10.3% |
| Food Manufacturing | 27,600 | 28,100 | 31,100 | -500 | -1.8% | -3,500 | -11.3% |
| Beverage and Tobacco Product Manufacturing | 10,900 | 10,800 | 11,000 | 100 | 0.9% | -100 | -0.9% |
| Paper Manufacturing | 9,900 | 9,900 | 10,100 | 0 | 0.0% | -200 | -2.0% |
| Printing and Related Support Activities | 19,400 | 19,900 | 23,300 | -500 | -2.5% | -3,900 | -16.7% |
| Chemical Manufacturing | 19,800 | 19,700 | 20,700 | 100 | 0.5% | -900 | -4.3% |

Source: Florida Agency for Workforce Innovation, Labor Market Statistics Center, Current Employment Statistics Program (in cooperation with the U.S. Department of Labor, Bureau of Labor Statistics).

**NONAGRICULTURAL EMPLOYMENT IN FLORIDA
STATEWIDE (Not Seasonally Adjusted)**

Released March 27, 2009

| Industry Title | February 2009 | January 2009 | February 2008 | Change from | | | |
|---|------------------|-----------------|------------------|-------------------------------|---------|-------------------------------|---------|
| | | | | Jan 2009 to Feb 2009 Level | Percent | Feb 2008 to Feb 2009 Level | Percent |
| Service Providing | 6,728,400 | 6,708,400 | 6,988,100 | 20,000 | 0.3% | -259,700 | -3.7% |
| Private Service Providing | 5,578,900 | 5,564,200 | 5,836,300 | 14,700 | 0.3% | -257,400 | -4.4% |
| Trade, Transportation, and Utilities | 1,521,000 | 1,528,300 | 1,611,200 | -7,300 | -0.5% | -90,200 | -5.6% |
| Wholesale Trade | 341,300 | 338,200 | 353,500 | 3,100 | 0.9% | -12,200 | -3.5% |
| Merchant Wholesalers, Durable Goods | 176,500 | 174,600 | 184,100 | 1,900 | 1.1% | -7,600 | -4.1% |
| Commercial Equipment Wholesalers | 47,700 | 47,200 | 47,900 | 500 | 1.1% | -200 | -0.4% |
| Electronic Goods Wholesalers | 23,100 | 23,200 | 23,800 | -100 | -0.4% | -700 | -2.9% |
| Machinery and Supply Wholesalers | 31,700 | 31,900 | 33,300 | -200 | -0.6% | -1,600 | -4.8% |
| Merchant Wholesalers, Nondurable Goods | 119,200 | 118,500 | 124,300 | 700 | 0.6% | -5,100 | -4.1% |
| Grocery and Related Product Wholesalers | 44,500 | 44,100 | 46,700 | 400 | 0.9% | -2,200 | -4.7% |
| Wholesale Electronic Markets and Agents | 45,600 | 45,100 | 45,100 | 500 | 1.1% | 500 | 1.1% |
| Retail Trade | 945,200 | 953,700 | 1,007,000 | -8,500 | -0.9% | -61,800 | -6.1% |
| Motor Vehicle and Parts Dealers | 114,400 | 115,200 | 132,800 | -800 | -0.7% | -18,400 | -13.9% |
| Automobile Dealers | 72,900 | 73,800 | 86,000 | -900 | -1.2% | -13,100 | -15.2% |
| Furniture and Home Furnishings Stores | 37,000 | 37,300 | 42,700 | -300 | -0.8% | -5,700 | -13.3% |
| Electronics and Appliance Stores | 36,100 | 36,300 | 37,100 | -200 | -0.6% | -1,000 | -2.7% |
| Building Material and Garden Supply Stores | 72,500 | 71,700 | 78,800 | 800 | 1.1% | -6,300 | -8.0% |
| Food and Beverage Stores | 190,200 | 191,500 | 197,900 | -1,300 | -0.7% | -7,700 | -3.9% |
| Health and Personal Care Stores | 69,900 | 71,200 | 72,600 | -1,300 | -1.8% | -2,700 | -3.7% |
| Gasoline Stations | 36,300 | 36,400 | 38,700 | -100 | -0.3% | -2,400 | -6.2% |
| Clothing and Accessory Stores | 103,700 | 106,300 | 107,900 | -2,600 | -2.4% | -4,200 | -3.9% |
| Sporting Goods, Hobby, Book, and Music Stores | 33,000 | 34,900 | 35,200 | -1,900 | -5.4% | -2,200 | -6.3% |
| General Merchandise Stores | 180,100 | 180,800 | 186,800 | -700 | -0.4% | -6,700 | -3.6% |
| Department Stores | 78,800 | 79,800 | 84,000 | -1,000 | -1.3% | -5,200 | -6.2% |
| Other General Merchandise Stores | 101,300 | 101,000 | 102,800 | 300 | 0.3% | -1,500 | -1.5% |
| Miscellaneous Store Retailers | 49,800 | 49,800 | 53,300 | 0 | 0.0% | -3,500 | -6.6% |
| Nonstore Retailers | 22,200 | 22,300 | 23,200 | -100 | -0.4% | -1,000 | -4.3% |
| Electronic Shopping and Mail-Order Houses | 14,800 | 14,700 | 14,600 | 100 | 0.7% | 200 | 1.4% |
| Transportation, Warehousing, and Utilities | 234,500 | 236,400 | 250,700 | -1,900 | -0.8% | -16,200 | -6.5% |
| Utilities | 23,800 | 23,700 | 23,700 | 100 | 0.4% | 100 | 0.4% |

Source: Florida Agency for Workforce Innovation, Labor Market Statistics Center, Current Employment Statistics Program (in cooperation with the U.S. Department of Labor, Bureau of Labor Statistics).

**NONAGRICULTURAL EMPLOYMENT IN FLORIDA
STATEWIDE (Not Seasonally Adjusted)**

Released March 27, 2009

| Industry Title | February 2009 | January 2009 | February 2008 | Change from | | | |
|--|------------------|-----------------|------------------|-------------------------------|---------|-------------------------------|---------|
| | | | | Jan 2009 to Feb 2009 Level | Percent | Feb 2008 to Feb 2009 Level | Percent |
| Transportation and Warehousing | 210,700 | 212,700 | 227,000 | -2,000 | -0.9% | -16,300 | -7.2% |
| Air Transportation | 30,500 | 30,600 | 31,900 | -100 | -0.3% | -1,400 | -4.4% |
| Water Transportation | 12,000 | 12,200 | 12,700 | -200 | -1.6% | -700 | -5.5% |
| Truck Transportation | 42,200 | 41,600 | 47,500 | 600 | 1.4% | -5,300 | -11.2% |
| Support Activities for Transportation | 44,800 | 47,200 | 50,900 | -2,400 | -5.1% | -6,100 | -12.0% |
| Couriers and Messengers | 29,700 | 29,900 | 31,000 | -200 | -0.7% | -1,300 | -4.2% |
| Warehousing and Storage | 27,700 | 28,100 | 29,100 | -400 | -1.4% | -1,400 | -4.8% |
| Information | 148,300 | 148,600 | 159,200 | -300 | -0.2% | -10,900 | -6.8% |
| Publishing Industries, except Internet | 37,800 | 37,900 | 42,100 | -100 | -0.3% | -4,300 | -10.2% |
| Broadcasting, except Internet | 14,200 | 14,500 | 15,800 | -300 | -2.1% | -1,600 | -10.1% |
| Telecommunications | 63,500 | 63,000 | 65,900 | 500 | 0.8% | -2,400 | -3.6% |
| Wired Telecommunications Carriers | 45,600 | 45,500 | 48,600 | 100 | 0.2% | -3,000 | -6.2% |
| Internet Service Providers and Data Processing | 16,600 | 16,700 | 17,600 | -100 | -0.6% | -1,000 | -5.7% |
| Financial Activities | 514,800 | 514,600 | 534,200 | 200 | 0.0% | -19,400 | -3.6% |
| Finance and Insurance | 341,000 | 342,900 | 359,900 | -1,900 | -0.6% | -18,900 | -5.3% |
| Credit Intermediation and Related Activities | 163,100 | 164,100 | 177,300 | -1,000 | -0.6% | -14,200 | -8.0% |
| Depository Credit Intermediation | 101,500 | 101,900 | 105,500 | -400 | -0.4% | -4,000 | -3.8% |
| Insurance Carriers and Related Activities | 132,600 | 132,700 | 136,600 | -100 | -0.1% | -4,000 | -2.9% |
| Insurance Carriers | 73,400 | 73,300 | 73,900 | 100 | 0.1% | -500 | -0.7% |
| Insurance Agencies, Brokerages, and Related | 59,200 | 59,400 | 62,700 | -200 | -0.3% | -3,500 | -5.6% |
| Real Estate, Rental, and Leasing | 173,800 | 171,700 | 174,300 | 2,100 | 1.2% | -500 | -0.3% |
| Real Estate | 126,600 | 126,600 | 127,400 | 0 | 0.0% | -800 | -0.6% |
| Professional and Business Services | 1,070,300 | 1,075,500 | 1,173,100 | -5,200 | -0.5% | -102,800 | -8.8% |
| Professional and Technical Services | 437,300 | 440,300 | 469,200 | -3,000 | -0.7% | -31,900 | -6.8% |
| Legal Services | 88,200 | 88,300 | 90,400 | -100 | -0.1% | -2,200 | -2.4% |
| Accounting, Tax Preparation, and Bookkeeping | 56,700 | 55,600 | 67,200 | 1,100 | 2.0% | -10,500 | -15.6% |
| Architectural, Engineering, and Related | 75,900 | 77,300 | 89,100 | -1,400 | -1.8% | -13,200 | -14.8% |
| Computer Systems Design and Related | 62,900 | 64,100 | 62,500 | -1,200 | -1.9% | 400 | 0.6% |
| Management, Scientific, and Technical | 69,800 | 70,100 | 68,700 | -300 | -0.4% | 1,100 | 1.6% |
| Management of Companies and Enterprises | 80,300 | 80,800 | 82,100 | -500 | -0.6% | -1,800 | -2.2% |

Source: Florida Agency for Workforce Innovation, Labor Market Statistics Center, Current Employment Statistics Program (in cooperation with the U.S. Department of Labor, Bureau of Labor Statistics).

**NONAGRICULTURAL EMPLOYMENT IN FLORIDA
STATEWIDE (Not Seasonally Adjusted)**

Released March 27, 2009

| Industry Title | February 2009 | January 2009 | February 2008 | Change from | | | |
|---|------------------|-----------------|------------------|-------------------------------|---------|-------------------------------|---------|
| | | | | Jan 2009 to Feb 2009 Level | Percent | Feb 2008 to Feb 2009 Level | Percent |
| Administrative and Waste Services | 552,700 | 554,400 | 621,800 | -1,700 | -0.3% | -69,100 | -11.1% |
| Administrative and Support Services | 532,200 | 534,000 | 601,600 | -1,800 | -0.3% | -69,400 | -11.5% |
| Employment Services | 192,600 | 190,300 | 228,200 | 2,300 | 1.2% | -35,600 | -15.6% |
| Business Support Services | 64,100 | 65,000 | 65,900 | -900 | -1.4% | -1,800 | -2.7% |
| Travel Arrangement and Reservation Services | 30,000 | 30,800 | 33,300 | -800 | -2.6% | -3,300 | -9.9% |
| Investigation and Security Services | 62,300 | 61,900 | 64,100 | 400 | 0.6% | -1,800 | -2.8% |
| Services to Buildings and Dwellings | 131,500 | 135,000 | 139,500 | -3,500 | -2.6% | -8,000 | -5.7% |
| Waste Management and Remediation Services | 20,500 | 20,400 | 20,200 | 100 | 0.5% | 300 | 1.5% |
| Education and Health Services | 1,062,900 | 1,059,400 | 1,043,900 | 3,500 | 0.3% | 19,000 | 1.8% |
| Educational Services | 140,900 | 140,400 | 139,600 | 500 | 0.4% | 1,300 | 0.9% |
| Elementary and Secondary Schools | 47,100 | 47,800 | 47,600 | -700 | -1.5% | -500 | -1.1% |
| Colleges and Universities | 53,500 | 51,800 | 51,100 | 1,700 | 3.3% | 2,400 | 4.7% |
| Health Care and Social Assistance | 922,000 | 919,000 | 904,300 | 3,000 | 0.3% | 17,700 | 2.0% |
| Ambulatory Health Care Services | 378,200 | 376,000 | 375,900 | 2,200 | 0.6% | 2,300 | 0.6% |
| Offices of Physicians | 171,200 | 170,600 | 170,900 | 600 | 0.4% | 300 | 0.2% |
| Home Health Care Services | 57,800 | 57,000 | 56,800 | 800 | 1.4% | 1,000 | 1.8% |
| Hospitals | 253,300 | 253,400 | 247,800 | -100 | 0.0% | 5,500 | 2.2% |
| Nursing and Residential Care Facilities | 175,000 | 175,100 | 168,200 | -100 | -0.1% | 6,800 | 4.0% |
| Nursing Care Facilities | 99,700 | 99,200 | 93,300 | 500 | 0.5% | 6,400 | 6.9% |
| Community Care for the Elderly | 45,600 | 45,600 | 44,500 | 0 | 0.0% | 1,100 | 2.5% |
| Social Assistance | 115,500 | 114,500 | 112,400 | 1,000 | 0.9% | 3,100 | 2.8% |
| Leisure and Hospitality | 931,100 | 908,100 | 968,600 | 23,000 | 2.5% | -37,500 | -3.9% |
| Arts, Entertainment, and Recreation | 180,700 | 175,400 | 189,600 | 5,300 | 3.0% | -8,900 | -4.7% |
| Amusement, Gambling, and Recreation | 137,700 | 134,900 | 147,200 | 2,800 | 2.1% | -9,500 | -6.5% |
| Amusement Parks and Arcades | 54,800 | 52,800 | 56,700 | 2,000 | 3.8% | -1,900 | -3.4% |
| Accommodation and Food Services | 750,400 | 732,700 | 779,000 | 17,700 | 2.4% | -28,600 | -3.7% |
| Accommodation | 154,200 | 151,400 | 163,700 | 2,800 | 1.8% | -9,500 | -5.8% |
| Food Services and Drinking Places | 596,200 | 581,300 | 615,300 | 14,900 | 2.6% | -19,100 | -3.1% |

Source: Florida Agency for Workforce Innovation, Labor Market Statistics Center, Current Employment Statistics Program (in cooperation with the U.S. Department of Labor, Bureau of Labor Statistics).

**NONAGRICULTURAL EMPLOYMENT IN FLORIDA
STATEWIDE (Not Seasonally Adjusted)**

Released March 27, 2009

| Industry Title | February 2009 | January 2009 | February 2008 | Change from | | | |
|---|------------------|-----------------|------------------|-------------------------------|---------|-------------------------------|---------|
| | | | | Jan 2009 to Feb 2009 Level | Percent | Feb 2008 to Feb 2009 Level | Percent |
| Other Services | 330,500 | 329,700 | 346,100 | 800 | 0.2% | -15,600 | -4.5% |
| Repair and Maintenance | 64,200 | 64,400 | 76,300 | -200 | -0.3% | -12,100 | -15.9% |
| Automotive Repair and Maintenance | 42,400 | 42,800 | 52,100 | -400 | -0.9% | -9,700 | -18.6% |
| Personal and Laundry Services | 86,100 | 85,600 | 85,200 | 500 | 0.6% | 900 | 1.1% |
| Membership Associations and Organizations | 180,200 | 179,700 | 184,600 | 500 | 0.3% | -4,400 | -2.4% |
| Total Government | 1,149,500 | 1,144,200 | 1,151,800 | 5,300 | 0.5% | -2,300 | -0.2% |
| Federal | 128,800 | 130,100 | 128,800 | -1,300 | -1.0% | 0 | 0.0% |
| State | 222,500 | 217,700 | 220,600 | 4,800 | 2.2% | 1,900 | 0.9% |
| Local | 798,200 | 796,400 | 802,400 | 1,800 | 0.2% | -4,200 | -0.5% |

Note: Employment estimates have been rounded to the nearest hundred. Sum of detail may not equal totals due to rounding or the exclusion of certain industries from publication. All data are subject to revision.

STATE OF FLORIDA
LOCAL AREA UNEMPLOYMENT STATISTICS BY COUNTY
(NOT SEASONALLY ADJUSTED)

| COUNTY | FEBRUARY 2009 | | | | JANUARY 2009 | | | | FEBRUARY 2008 | | | |
|--------------|---------------|-----------------|-----------------------|----------|--------------|-----------------|-----------------------|----------|---------------|-----------------|-----------------------|----------|
| | LABOR FORCE | EMPLOY- MENT | UNEMPLOYMENT LEVEL | RATE (%) | LABOR FORCE | EMPLOY- MENT | UNEMPLOYMENT LEVEL | RATE (%) | LABOR FORCE | EMPLOY- MENT | UNEMPLOYMENT LEVEL | RATE (%) |
| ALACHUA | 131852 | 123878 | 7974 | 6.0 | 131700 | 124057 | 7643 | 5.8 | 129626 | 125515 | 4111 | 3.2 |
| BAKER | 11957 | 10913 | 1044 | 8.7 | 11974 | 10977 | 997 | 8.3 | 11861 | 11294 | 567 | 4.8 |
| BAY | 87810 | 79258 | 8552 | 9.7 | 87682 | 78945 | 8737 | 10.0 | 84573 | 80675 | 3898 | 4.6 |
| BRADFORD | 12657 | 11737 | 920 | 7.3 | 12659 | 11773 | 886 | 7.0 | 12155 | 11680 | 475 | 3.9 |
| BREVARD | 264904 | 238290 | 26614 | 10.0 | 265403 | 239938 | 25465 | 9.6 | 263917 | 250281 | 13636 | 5.2 |
| BROWARD | 998331 | 915908 | 82423 | 8.3 | 1001844 | 923560 | 78284 | 7.8 | 997474 | 956597 | 40877 | 4.1 |
| CALHOUN | 6065 | 5584 | 481 | 7.9 | 6077 | 5597 | 480 | 7.9 | 5644 | 5421 | 223 | 4.0 |
| CHARLOTTE | 69820 | 61597 | 8223 | 11.8 | 69724 | 61913 | 7811 | 11.2 | 70038 | 65480 | 4558 | 6.5 |
| CITRUS | 59418 | 52508 | 6910 | 11.6 | 58996 | 52253 | 6743 | 11.4 | 55727 | 52099 | 3628 | 6.5 |
| CLAY | 94408 | 86035 | 8373 | 8.9 | 94363 | 86536 | 7827 | 8.3 | 93015 | 89035 | 3980 | 4.3 |
| COLLIER | 151672 | 137702 | 13970 | 9.2 | 152542 | 139041 | 13501 | 8.9 | 153135 | 145627 | 7508 | 4.9 |
| COLUMBIA | 32762 | 30141 | 2621 | 8.0 | 32623 | 30088 | 2535 | 7.8 | 30917 | 29596 | 1321 | 4.3 |
| DESOTO | 15938 | 14606 | 1332 | 8.4 | 15981 | 14694 | 1287 | 8.1 | 15192 | 14472 | 720 | 4.7 |
| DIXIE | 5622 | 5003 | 619 | 11.0 | 5666 | 5068 | 598 | 10.6 | 5402 | 5075 | 327 | 6.1 |
| DUVAL | 444265 | 401933 | 42332 | 9.5 | 444358 | 404273 | 40085 | 9.0 | 436695 | 415948 | 20747 | 4.8 |
| ESCAMBIA | 140675 | 127115 | 13560 | 9.6 | 140710 | 127747 | 12963 | 9.2 | 136683 | 130342 | 6341 | 4.6 |
| FLAGLER | 32100 | 27546 | 4554 | 14.2 | 32011 | 27381 | 4630 | 14.5 | 30986 | 28551 | 2435 | 7.9 |
| FRANKLIN | 4611 | 4262 | 349 | 7.6 | 4492 | 4169 | 323 | 7.2 | 4516 | 4340 | 176 | 3.9 |
| GADSDEN | 21885 | 19479 | 2406 | 11.0 | 21670 | 19422 | 2248 | 10.4 | 20792 | 19802 | 990 | 4.8 |
| GILCHRIST | 7922 | 7247 | 675 | 8.5 | 7907 | 7257 | 650 | 8.2 | 7671 | 7343 | 328 | 4.3 |
| GLADES | 5035 | 4632 | 403 | 8.0 | 5050 | 4656 | 394 | 7.8 | 4715 | 4500 | 215 | 4.6 |
| GULF | 6240 | 5668 | 572 | 9.2 | 6197 | 5635 | 562 | 9.1 | 6078 | 5783 | 295 | 4.9 |
| HAMILTON | 4900 | 4335 | 565 | 11.5 | 4919 | 4362 | 557 | 11.3 | 4593 | 4344 | 249 | 5.4 |
| HARDEE | 12767 | 11707 | 1060 | 8.3 | 12694 | 11702 | 992 | 7.8 | 11836 | 11326 | 510 | 4.3 |
| HENDRY | 19693 | 17555 | 2138 | 10.9 | 19688 | 17600 | 2088 | 10.6 | 18190 | 16940 | 1250 | 6.9 |
| HERNANDO | 63404 | 55321 | 8083 | 12.7 | 63575 | 55685 | 7890 | 12.4 | 62031 | 57659 | 4372 | 7.0 |
| HIGHLANDS | 43788 | 39637 | 4151 | 9.5 | 43587 | 39527 | 4060 | 9.3 | 41111 | 38933 | 2178 | 5.3 |
| HILLSBOROUGH | 601944 | 543629 | 58315 | 9.7 | 603091 | 547207 | 55884 | 9.3 | 595600 | 566608 | 28992 | 4.9 |
| HOLMES | 9306 | 8546 | 760 | 8.2 | 9240 | 8541 | 699 | 7.6 | 8671 | 8317 | 354 | 4.1 |
| INDIAN RIVER | 61079 | 54032 | 7047 | 11.5 | 61339 | 54642 | 6697 | 10.9 | 62355 | 58604 | 3751 | 6.0 |
| JACKSON | 22352 | 20802 | 1550 | 6.9 | 22388 | 20855 | 1533 | 6.8 | 21603 | 20737 | 866 | 4.0 |
| JEFFERSON | 6899 | 6396 | 503 | 7.3 | 6871 | 6377 | 494 | 7.2 | 6752 | 6502 | 250 | 3.7 |
| LAFAYETTE | 3149 | 2906 | 243 | 7.7 | 3135 | 2906 | 229 | 7.3 | 2951 | 2856 | 95 | 3.2 |
| LAKE | 134434 | 120531 | 13903 | 10.3 | 134668 | 121376 | 13292 | 9.9 | 133588 | 126971 | 6617 | 5.0 |
| LEE | 281010 | 247254 | 33756 | 12.0 | 281150 | 248665 | 32485 | 11.6 | 289863 | 271440 | 18423 | 6.4 |
| LEON | 146842 | 137685 | 9157 | 6.2 | 146109 | 137278 | 8831 | 6.0 | 144707 | 139963 | 4744 | 3.3 |
| LEVY | 17465 | 15613 | 1852 | 10.6 | 17399 | 15632 | 1767 | 10.2 | 16641 | 15779 | 862 | 5.2 |
| LIBERTY | 4043 | 3822 | 221 | 5.5 | 4034 | 3814 | 220 | 5.5 | 3715 | 3600 | 115 | 3.1 |

STATE OF FLORIDA
LOCAL AREA UNEMPLOYMENT STATISTICS BY COUNTY
(NOT SEASONALLY ADJUSTED)

| COUNTY | FEBRUARY 2009 | | | | JANUARY 2009 | | | | FEBRUARY 2008 | | | |
|-------------------------|---------------|-----------------|-----------------------|--------------------------|--------------|-----------------|-----------------------|--------------------------|---------------|-----------------|-----------------------|--------------------------|
| | LABOR FORCE | EMPLOY- MENT | UNEMPLOYMENT LEVEL | UNEMPLOYMENT RATE (%) | LABOR FORCE | EMPLOY- MENT | UNEMPLOYMENT LEVEL | UNEMPLOYMENT RATE (%) | LABOR FORCE | EMPLOY- MENT | UNEMPLOYMENT LEVEL | UNEMPLOYMENT RATE (%) |
| MADISON | 6939 | 6230 | 709 | 10.2 | 6913 | 6223 | 690 | 10.0 | 6790 | 6429 | 361 | 5.3 |
| MANATEE | 145024 | 129080 | 15944 | 11.0 | 145222 | 130368 | 14854 | 10.2 | 145695 | 138246 | 7449 | 5.1 |
| MARION | 140825 | 123570 | 17255 | 12.3 | 140698 | 124310 | 16388 | 11.6 | 136760 | 128583 | 8177 | 6.0 |
| MARTIN | 63980 | 57483 | 6497 | 10.2 | 63986 | 57759 | 6227 | 9.7 | 64027 | 60647 | 3380 | 5.3 |
| MIAMI-DADE | 1195091 | 1106006 | 89085 | 7.5 | 1197822 | 1115340 | 82482 | 6.9 | 1202698 | 1146239 | 56459 | 4.7 |
| MONROE | 48752 | 45741 | 3011 | 6.2 | 48259 | 45349 | 2910 | 6.0 | 47011 | 45607 | 1404 | 3.0 |
| NASSAU | 35505 | 32325 | 3180 | 9.0 | 35622 | 32514 | 3108 | 8.7 | 34916 | 33453 | 1463 | 4.2 |
| OKALOOSA | 95982 | 88998 | 6984 | 7.3 | 96315 | 89408 | 6907 | 7.2 | 93399 | 89755 | 3644 | 3.9 |
| OKEECHOBEE | 18547 | 16515 | 2032 | 11.0 | 18589 | 16579 | 2010 | 10.8 | 17485 | 16523 | 962 | 5.5 |
| ORANGE | 599901 | 542124 | 57777 | 9.6 | 600811 | 545923 | 54888 | 9.1 | 596710 | 571088 | 25622 | 4.3 |
| OSCEOLA | 134949 | 120533 | 14416 | 10.7 | 135007 | 121378 | 13629 | 10.1 | 133405 | 126973 | 6432 | 4.8 |
| PALM BEACH | 628988 | 568152 | 60836 | 9.7 | 629847 | 571810 | 58037 | 9.2 | 619081 | 588218 | 30863 | 5.0 |
| PASCO | 197111 | 174893 | 22218 | 11.3 | 197446 | 176044 | 21402 | 10.8 | 193794 | 182286 | 11508 | 5.9 |
| PINELLAS | 457198 | 411259 | 45939 | 10.0 | 457750 | 413966 | 43784 | 9.6 | 450760 | 428643 | 22117 | 4.9 |
| POLK | 272462 | 244147 | 28315 | 10.4 | 273727 | 246346 | 27381 | 10.0 | 269177 | 255892 | 13285 | 4.9 |
| PUTNAM | 33167 | 29533 | 3634 | 11.0 | 33083 | 29512 | 3571 | 10.8 | 31732 | 29937 | 1795 | 5.7 |
| ST. JOHNS | 92569 | 84995 | 7574 | 8.2 | 92647 | 85490 | 7157 | 7.7 | 91651 | 87959 | 3692 | 4.0 |
| ST. LUCIE | 123746 | 108066 | 15680 | 12.7 | 123593 | 108586 | 15007 | 12.1 | 121967 | 114016 | 7951 | 6.5 |
| SANTA ROSA | 69038 | 63044 | 5994 | 8.7 | 69143 | 63358 | 5785 | 8.4 | 67601 | 64645 | 2956 | 4.4 |
| SARASOTA | 167315 | 149533 | 17782 | 10.6 | 168123 | 151026 | 17097 | 10.2 | 169477 | 160153 | 9324 | 5.5 |
| SEMINOLE | 239168 | 217940 | 21228 | 8.9 | 239683 | 219467 | 20216 | 8.4 | 240084 | 229584 | 10500 | 4.4 |
| SUMTER | 33005 | 30273 | 2732 | 8.3 | 32735 | 30137 | 2598 | 7.9 | 30226 | 28896 | 1330 | 4.4 |
| SUWANNEE | 17887 | 16308 | 1579 | 8.8 | 17842 | 16335 | 1507 | 8.4 | 16852 | 16102 | 750 | 4.5 |
| TAYLOR | 9347 | 8375 | 972 | 10.4 | 9271 | 8309 | 962 | 10.4 | 8934 | 8499 | 435 | 4.9 |
| UNION | 5271 | 4904 | 367 | 7.0 | 5237 | 4906 | 331 | 6.3 | 5119 | 4925 | 194 | 3.8 |
| VOLUSIA | 254309 | 228068 | 26241 | 10.3 | 252695 | 227350 | 25345 | 10.0 | 252621 | 239861 | 12760 | 5.1 |
| WAKULLA | 15484 | 14375 | 1109 | 7.2 | 15330 | 14332 | 998 | 6.5 | 15143 | 14613 | 530 | 3.5 |
| WALTON | 31753 | 29298 | 2455 | 7.7 | 31555 | 29191 | 2364 | 7.5 | 29140 | 27928 | 1212 | 4.2 |
| WASHINGTON | 10062 | 9081 | 981 | 9.7 | 10069 | 9101 | 968 | 9.6 | 9521 | 9042 | 479 | 5.0 |
| FLORIDA | | | | | | | | | | | | |
| NOT SEASONALLY ADJUSTED | | | | | | | | | | | | |
| | 9182000 | 8322000 | 861000 | 9.4 | 9193000 | 8372000 | 821000 | 8.9 | 9103000 | 8665000 | 438000 | 4.8 |
| SEASONALLY ADJUSTED | | | | | | | | | | | | |
| | 9252000 | 8378000 | 874000 | 9.4 | 9268000 | 8454000 | 814000 | 8.8 | 9164000 | 8688000 | 476000 | 5.2 |
| UNITED STATES | | | | | | | | | | | | |
| NOT SEASONALLY ADJUSTED | | | | | | | | | | | | |
| | 153804000 | 140105000 | 13699000 | 8.9 | 153445000 | 140436000 | 13009000 | 8.5 | 152503000 | 144550000 | 7953000 | 5.2 |
| SEASONALLY ADJUSTED | | | | | | | | | | | | |
| | 154214000 | 141748000 | 12467000 | 8.1 | 153716000 | 142099000 | 11616000 | 7.6 | 153498000 | 146075000 | 7423000 | 4.8 |

PAGE 2 OF 2

RELEASED MARCH 27, 2009

NOTE: Items may not add to totals or compute to displayed percentages due to rounding. All data are subject to revision.

SOURCE: Florida Agency for Workforce Innovation, Labor Market Statistics Center, Local Area Unemployment Statistics Program, in cooperation with the U.S. Department of Labor, Bureau of Labor Statistics.

STATE OF FLORIDA
 LOCAL AREA UNEMPLOYMENT STATISTICS BY METROPOLITAN STATISTICAL AREA (MSA)
 (NOT SEASONALLY ADJUSTED)

| MSA (COUNTIES) | FEBRUARY 2009 | | | | JANUARY 2009 | | | | FEBRUARY 2008 | | | |
|---|---------------|-----------------|-----------------------|----------|--------------|-----------------|-----------------------|----------|---------------|-----------------|-----------------------|----------|
| | LABOR FORCE | EMPLOY- MENT | UNEMPLOYMENT LEVEL | RATE (%) | LABOR FORCE | EMPLOY- MENT | UNEMPLOYMENT LEVEL | RATE (%) | LABOR FORCE | EMPLOY- MENT | UNEMPLOYMENT LEVEL | RATE (%) |
| BRADENTON-SARASOTA-VENICE (Manatee and Sarasota) | 312339 | 278613 | 33726 | 10.8 | 313345 | 281394 | 31951 | 10.2 | 315172 | 298399 | 16773 | 5.3 |
| CAPE CORAL-FT. MYERS (Lee) | 281010 | 247254 | 33756 | 12.0 | 281150 | 248665 | 32485 | 11.6 | 289863 | 271440 | 18423 | 6.4 |
| DELTONA-DAYTONA BEACH-ORMOND BEACH (Volusia) | 254309 | 228068 | 26241 | 10.3 | 252695 | 227350 | 25345 | 10.0 | 252621 | 239861 | 12760 | 5.1 |
| FT. WALTON BEACH-CRESTVIEW-DESTIN (Okaloosa) | 95982 | 88998 | 6984 | 7.3 | 96315 | 89408 | 6907 | 7.2 | 93399 | 89755 | 3644 | 3.9 |
| GAINESVILLE (Alachua and Gilchrist) | 139774 | 131125 | 8649 | 6.2 | 139607 | 131314 | 8293 | 5.9 | 137297 | 132858 | 4439 | 3.2 |
| JACKSONVILLE (Baker, Clay, Duval, Nassau, and St. Johns) | 678705 | 616202 | 62503 | 9.2 | 678964 | 619790 | 59174 | 8.7 | 668139 | 637689 | 30450 | 4.6 |
| LAKELAND-WINTER HAVEN (Polk) | 272462 | 244147 | 28315 | 10.4 | 273727 | 246346 | 27381 | 10.0 | 269177 | 255892 | 13285 | 4.9 |
| MIAMI-FT. LAUDERDALE-POMPANO BEACH (Broward, Miami-Dade, and Palm Beach) | 2822410 | 2590066 | 232344 | 8.2 | 2829513 | 2610710 | 218803 | 7.7 | 2819253 | 2691054 | 128199 | 4.5 |
| Ft. Lauderdale-Pompano Beach-Deerfield Beach Metropolitan Division (Broward) | 998331 | 915908 | 82423 | 8.3 | 1001844 | 923560 | 78284 | 7.8 | 997474 | 956597 | 40877 | 4.1 |
| Miami-Miami Beach-Kendall Metropolitan Division (Miami-Dade) | 1195091 | 1106006 | 89085 | 7.5 | 1197822 | 1115340 | 82482 | 6.9 | 1202698 | 1146239 | 56459 | 4.7 |
| West Palm Beach-Boca Raton-Boynton Beach Metropolitan Division (Palm Beach) | 628988 | 568152 | 60836 | 9.7 | 629847 | 571810 | 58037 | 9.2 | 619081 | 588218 | 30863 | 5.0 |
| NAPLES-MARCO ISLAND (Collier) | 151672 | 137702 | 13970 | 9.2 | 152542 | 139041 | 13501 | 8.9 | 153135 | 145627 | 7508 | 4.9 |
| OCALA (Marion) | 140825 | 123570 | 17255 | 12.3 | 140698 | 124310 | 16388 | 11.6 | 136760 | 128583 | 8177 | 6.0 |
| ORLANDO-KISSIMMEE (Lake, Orange, Osceola, and Seminole) | 1108451 | 1001128 | 107323 | 9.7 | 1110168 | 1008143 | 102025 | 9.2 | 1103785 | 1054615 | 49170 | 4.5 |
| PALM BAY-MELBOURNE-TITUSVILLE (Brevard) | 264904 | 238290 | 26614 | 10.0 | 265403 | 239938 | 25465 | 9.6 | 263917 | 250281 | 13636 | 5.2 |
| PALM COAST (Flagler) | 32100 | 27546 | 4554 | 14.2 | 32011 | 27381 | 4630 | 14.5 | 30986 | 28551 | 2435 | 7.9 |
| PANAMA CITY-LYNN HAVEN-PANAMA CITY BEACH (Bay) | 87810 | 79258 | 8552 | 9.7 | 87682 | 78945 | 8737 | 10.0 | 84573 | 80675 | 3898 | 4.6 |
| PENSACOLA-FERRY PASS-BRENT (Escambia and Santa Rosa) | 209713 | 190159 | 19554 | 9.3 | 209853 | 191105 | 18748 | 8.9 | 204284 | 194987 | 9297 | 4.6 |
| PORT ST. LUCIE (Martin and St. Lucie) | 187726 | 165549 | 22177 | 11.8 | 187579 | 166345 | 21234 | 11.3 | 185994 | 174663 | 11331 | 6.1 |
| PUNTA GORDA (Charlotte) | 69820 | 61597 | 8223 | 11.8 | 69724 | 61913 | 7811 | 11.2 | 70038 | 65480 | 4558 | 6.5 |
| SEBASTIAN-VERO BEACH (Indian River) | 61079 | 54032 | 7047 | 11.5 | 61339 | 54642 | 6697 | 10.9 | 62355 | 58604 | 3751 | 6.0 |
| TALLAHASSEE (Gadsden, Jefferson, Leon, and Wakulla) | 191111 | 177936 | 13175 | 6.9 | 189980 | 177409 | 12571 | 6.6 | 187392 | 180879 | 6513 | 3.5 |
| TAMPA-ST. PETERSBURG-CLEARWATER (Hernando, Hillsborough, Pasco, and Pinellas) | 1319659 | 1185103 | 134556 | 10.2 | 1321861 | 1192901 | 128960 | 9.8 | 1302184 | 1235195 | 66989 | 5.1 |
| FLORIDA | | | | | | | | | | | | |
| NOT SEASONALLY ADJUSTED | 9182000 | 8322000 | 861000 | 9.4 | 9193000 | 8372000 | 821000 | 8.9 | 9103000 | 8665000 | 438000 | 4.8 |
| SEASONALLY ADJUSTED | 9252000 | 8378000 | 874000 | 9.4 | 9268000 | 8454000 | 814000 | 8.8 | 9164000 | 8688000 | 476000 | 5.2 |
| UNITED STATES | | | | | | | | | | | | |
| NOT SEASONALLY ADJUSTED | 153804000 | 140105000 | 13699000 | 8.9 | 153445000 | 140436000 | 13009000 | 8.5 | 152503000 | 144550000 | 7953000 | 5.2 |
| SEASONALLY ADJUSTED | 154214000 | 141748000 | 12467000 | 8.1 | 153716000 | 142099000 | 11616000 | 7.6 | 153498000 | 146075000 | 7423000 | 4.8 |

RELEASED MARCH 27, 2009

NOTE: Items may not add to totals or compute to displayed percentages due to rounding. All data are subject to revision.

SOURCE: Florida Agency for Workforce Innovation, Labor Market Statistics Center, Local Area Unemployment Statistics Program, in cooperation with the U.S. Department of Labor, Bureau of Labor Statistics.

STATE OF FLORIDA
COUNTIES RANKED BY UNEMPLOYMENT RATE
(NOT SEASONALLY ADJUSTED)

FEBRUARY 2009
(Preliminary)

RELEASED 03/27/2009

| UNEMPLOYMENT | | | UNEMPLOYMENT | | |
|--------------|--------------|----------|--------------|----------------------|------------|
| RANK | COUNTY | RATE (%) | RANK | COUNTY | RATE (%) |
| 1 | FLAGLER | 14.2 | | FLORIDA | 9.4 |
| 2 | HERNANDO | 12.7 | 36 | COLLIER | 9.2 |
| 3 | ST. LUCIE | 12.7 | 37 | GULF | 9.2 |
| 4 | MARION | 12.3 | 38 | NASSAU | 9.0 |
| 5 | LEE | 12.0 | 39 | SEMINOLE | 8.9 |
| 6 | CHARLOTTE | 11.8 | 40 | CLAY | 8.9 |
| 7 | CITRUS | 11.6 | | UNITED STATES | 8.9 |
| 8 | INDIAN RIVER | 11.5 | 41 | SUWANNEE | 8.8 |
| 9 | HAMILTON | 11.5 | 42 | BAKER | 8.7 |
| 10 | PASCO | 11.3 | 43 | SANTA ROSA | 8.7 |
| 11 | DIXIE | 11.0 | 44 | GILCHRIST | 8.5 |
| 12 | MANATEE | 11.0 | 45 | DESOTO | 8.4 |
| 13 | GADSDEN | 11.0 | 46 | HARDEE | 8.3 |
| 14 | PUTNAM | 11.0 | 47 | SUMTER | 8.3 |
| 15 | OKEECHOBEE | 11.0 | 48 | BROWARD | 8.3 |
| 16 | HENDRY | 10.9 | 49 | ST. JOHNS | 8.2 |
| 17 | OSCEOLA | 10.7 | 50 | HOLMES | 8.2 |
| 18 | SARASOTA | 10.6 | 51 | GLADES | 8.0 |
| 19 | LEVY | 10.6 | 52 | COLUMBIA | 8.0 |
| 20 | TAYLOR | 10.4 | 53 | CALHOUN | 7.9 |
| 21 | POLK | 10.4 | 54 | WALTON | 7.7 |
| 22 | LAKE | 10.3 | 55 | LAFAYETTE | 7.7 |
| 23 | VOLUSIA | 10.3 | 56 | FRANKLIN | 7.6 |
| 24 | MADISON | 10.2 | 57 | MIAMI-DADE | 7.5 |
| 25 | MARTIN | 10.2 | 58 | JEFFERSON | 7.3 |
| 26 | PINELLAS | 10.0 | 59 | OKALOOSA | 7.3 |
| 27 | BREVARD | 10.0 | 60 | BRADFORD | 7.3 |
| 28 | WASHINGTON | 9.7 | 61 | WAKULLA | 7.2 |
| 29 | BAY | 9.7 | 62 | UNION | 7.0 |
| 30 | HILLSBOROUGH | 9.7 | 63 | JACKSON | 6.9 |
| 31 | PALM BEACH | 9.7 | 64 | LEON | 6.2 |
| 32 | ESCAMBIA | 9.6 | 65 | MONROE | 6.2 |
| 33 | ORANGE | 9.6 | 66 | ALACHUA | 6.0 |
| 34 | DUVAL | 9.5 | 67 | LIBERTY | 5.5 |
| 35 | HIGHLANDS | 9.5 | | | |

NOTE: All data are subject to revision.

Source: Florida Agency for Workforce Innovation, Labor Market Statistics Center, Local Area Unemployment Statistics Program, in cooperation with the U.S. Department of Labor, Bureau of Labor Statistics.

STATE OF FLORIDA
 METROPOLITAN STATISTICAL AREAS (MSAs) AND METROPOLITAN DIVISIONS (MDs)
 RANKED BY UNEMPLOYMENT RATE
 (NOT SEASONALLY ADJUSTED)
 FEBRUARY 2009 (Preliminary)

| | |
|---|------------|
| 1. Palm Coast MSA | 14.2 % |
| 2. Ocala MSA | 12.3 |
| 3. Cape Coral-Ft. Myers MSA | 12.0 |
| 4. Port St. Lucie MSA | 11.8 |
| 5. Punta Gorda MSA | 11.8 |
| 6. Sebastian-Vero Beach MSA | 11.5 |
| 7. Bradenton-Sarasota-Venice MSA | 10.8 |
| 8. Lakeland-Winter Haven MSA | 10.4 |
| 9. Deltona-Daytona Beach-Ormond Beach MSA | 10.3 |
| 10. Tampa-St. Petersburg-Clearwater MSA | 10.2 |
| 11. Palm Bay-Melbourne-Titusville MSA | 10.0 |
| 12. Panama City-Lynn Haven-Panama City Beach MSA | 9.7 |
| 13. Orlando-Kissimmee MSA | 9.7 |
| 14. West Palm Beach-Boca Raton-Boynton Beach MD | 9.7 |
| Florida | 9.4 |
| 15. Pensacola-Ferry Pass-Brent MSA | 9.3 |
| 16. Naples-Marco Island MSA | 9.2 |
| 17. Jacksonville MSA | 9.2 |
| United States | 8.9 |
| 18. Ft. Lauderdale-Pompano Beach-Deerfield Beach MD | 8.3 |
| 19. Miami-Ft. Lauderdale-Pompano Beach MSA | 8.2 |
| 20. Miami-Miami Beach-Kendall MD | 7.5 |
| 21. Ft. Walton Beach-Crestview-Destin MSA | 7.3 |
| 22. Tallahassee MSA | 6.9 |
| 23. Gainesville MSA | 6.2 |

Released March 27, 2009

NOTE: All data are subject to revision.

Source: Florida Agency for Workforce Innovation, Labor Market Statistics Center, Local Area Unemployment Statistics Program, in cooperation with the U.S. Department of Labor, Bureau of Labor Statistics.

TOTAL NONAGRICULTURAL EMPLOYMENT
FLORIDA (Not Seasonally Adjusted)

| Area | February 2009 | January 2009 | February 2008 | Over-the-Month Change | | Over-the-Year Change | |
|---|------------------|-----------------|------------------|--------------------------|---------|-------------------------|---------|
| | | | | Level | Percent | Level | Percent |
| Statewide | 7,520,600 | 7,525,100 | 7,927,800 | -4,500 | -0.1% | -407,200 | -5.1% |
| Bradenton-Sarasota-Venice MSA | 258,200 | 259,000 | 279,300 | -800 | -0.3% | -21,100 | -7.6% |
| Cape Coral-Ft. Myers MSA | 206,100 | 206,400 | 226,900 | -300 | -0.1% | -20,800 | -9.2% |
| Deltona-Daytona Beach-Ormond Beach MSA | 163,800 | 161,600 | 173,900 | +2,200 | +1.4% | -10,100 | -5.8% |
| Ft. Lauderdale-Pompano Beach-Deerfield Beach MD | 751,700 | 753,500 | 786,900 | -1,800 | -0.2% | -35,200 | -4.5% |
| Ft. Walton Beach-Crestview-Destin MSA | 80,000 | 79,800 | 81,500 | +200 | +0.3% | -1,500 | -1.8% |
| Gainesville MSA | 134,500 | 133,700 | 137,200 | +800 | +0.6% | -2,700 | -2.0% |
| Jacksonville MSA | 603,300 | 602,200 | 629,500 | +1,100 | +0.2% | -26,200 | -4.2% |
| Lakeland-Winter Haven MSA | 203,100 | 203,700 | 213,600 | -600 | -0.3% | -10,500 | -4.9% |
| Miami-Ft. Lauderdale-Pompano Beach MSA | 2,316,000 | 2,319,800 | 2,413,900 | -3,800 | -0.2% | -97,900 | -4.1% |
| Miami-Miami Beach-Kendall MD | 1,028,400 | 1,030,600 | 1,067,800 | -2,200 | -0.2% | -39,400 | -3.7% |
| Naples-Marco Island MSA | 123,000 | 123,300 | 131,100 | -300 | -0.2% | -8,100 | -6.2% |
| Ocala MSA | 100,600 | 100,500 | 106,000 | +100 | +0.1% | -5,400 | -5.1% |
| Orlando-Kissimmee MSA | 1,042,500 | 1,043,100 | 1,099,400 | -600 | -0.1% | -56,900 | -5.2% |
| Palm Bay-Melbourne-Titusville MSA | 200,900 | 200,900 | 212,600 | +0 | +0.0% | -11,700 | -5.5% |
| Panama City-Lynn Haven-Panama City Beach MSA | 72,800 | 72,100 | 74,800 | +700 | +1.0% | -2,000 | -2.7% |
| Pensacola-Ferry Pass-Brent MSA | 163,600 | 163,400 | 169,400 | +200 | +0.1% | -5,800 | -3.4% |
| Port St. Lucie MSA | 124,400 | 124,000 | 132,800 | +400 | +0.3% | -8,400 | -6.3% |
| Punta Gorda MSA | 41,900 | 41,800 | 44,900 | +100 | +0.2% | -3,000 | -6.7% |
| Sebastian-Vero Beach MSA | 45,400 | 46,000 | 49,400 | -600 | -1.3% | -4,000 | -8.1% |
| Tallahassee MSA | 176,100 | 174,200 | 180,300 | +1,900 | +1.1% | -4,200 | -2.3% |
| Tampa-St. Petersburg-Clearwater MSA | 1,193,600 | 1,194,000 | 1,245,000 | -400 | ** | -51,400 | -4.1% |
| West Palm Beach-Boca Raton-Boynton Beach MD | 535,900 | 535,700 | 559,200 | +200 | ** | -23,300 | -4.2% |

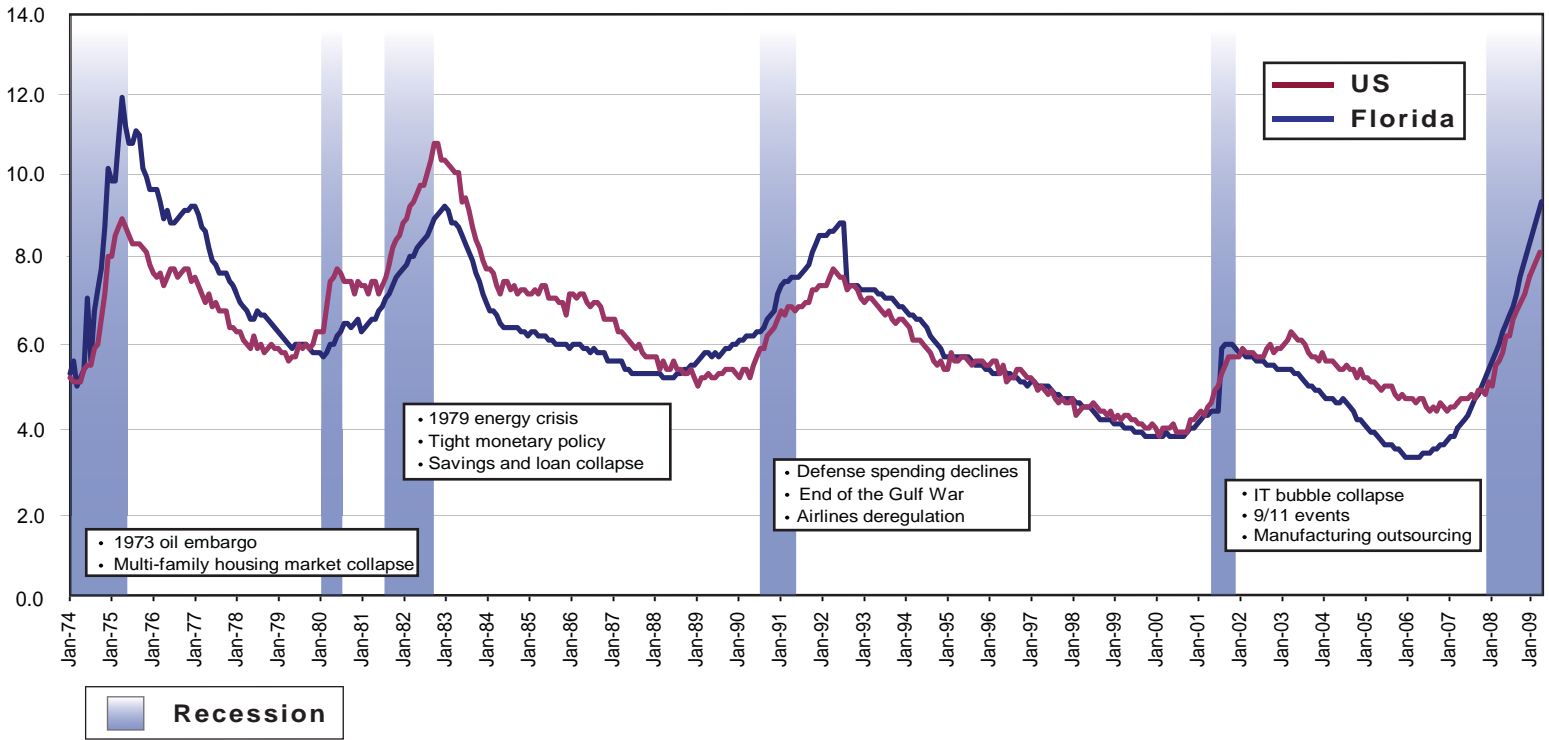
** = Less than 0.05 percent

Note: Employment estimates have been rounded to the nearest hundred. Sum of detail may not equal totals due to rounding or the exclusion of certain industries from publication. All data are subject to revision. Released March 27, 2009.

Source: Florida Agency for Workforce Innovation, Labor Market Statistics Center, Current Employment Statistics Program (in cooperation with the U.S. Department of Labor, Bureau of Labor Statistics).

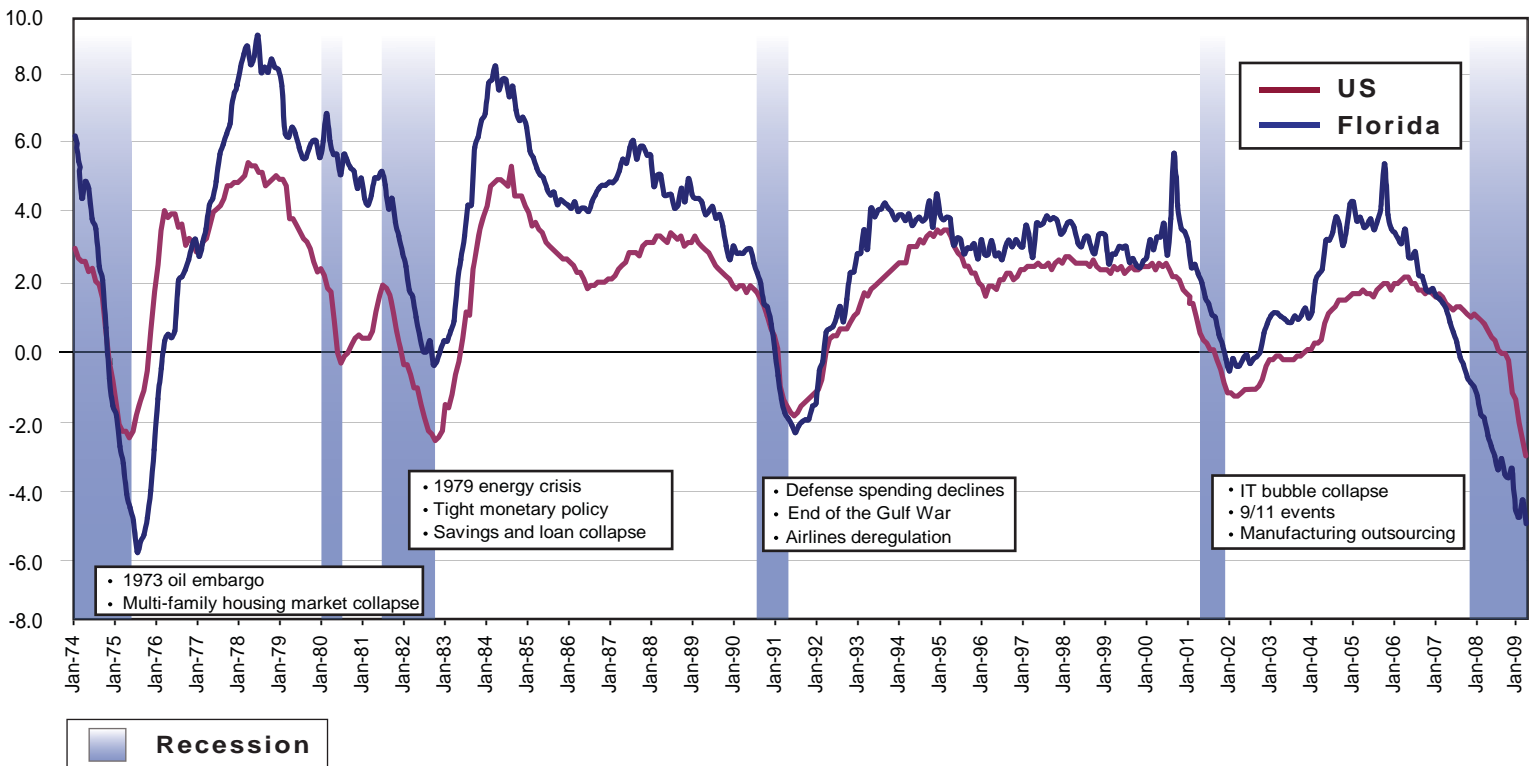
Florida and United States Labor Statistics and Recessionary Periods January 1974 - February 2009

Unemployment Rates



Source: Florida Agency for Workforce Innovation, Labor Market Statistics Center, Local Area Unemployment Statistics Program, in cooperation with the U.S. Department of Labor, Bureau of Labor Statistics.
Prepared March, 2009 (seasonally adjusted)

Total Nonagricultural Employment Annual Job Growth Rates



Source: Florida Agency for Workforce Innovation, Labor Market Statistics Center, Current Employment Statistics Program, in cooperation with the U.S. Department of Labor, Bureau of Labor Statistics.
Prepared March, 2009 (not seasonally adjusted)